

Seclusion and Restraint Report

Andrea R. Rivers, MS – DPBH Administrator
Susan Lynch, MBA – SNAMHS Hospital Administrator

March 19, 2026



NEVADA DIVISION of PUBLIC
and BEHAVIORAL HEALTH

ALL IN GOOD HEALTH.

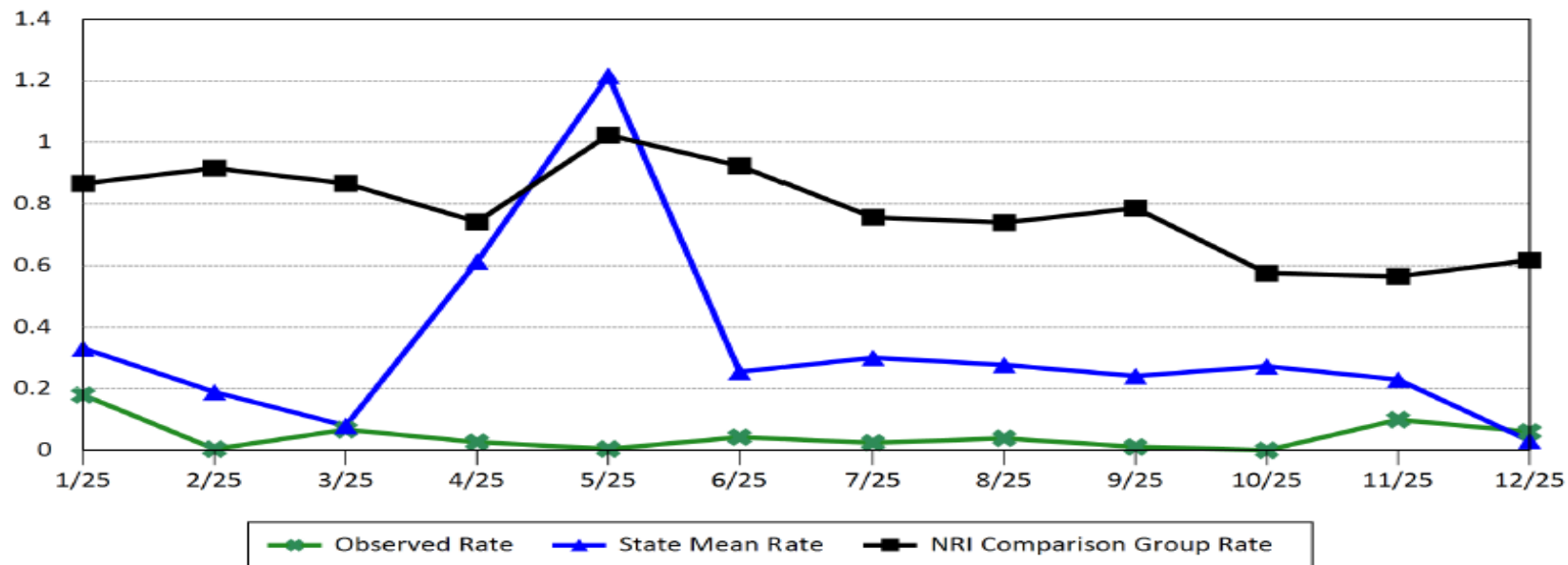
AGENDA

1. NNAMHS Restraint Data
2. NNAMHS Seclusion Data
3. SNAMHS Restraint Data
4. SNAMHS Seclusion Data
5. STATEWIDE - Overall Use Of Restraints
6. STATEWIDE - Overall Use Of Seclusion
7. NNAMHS: Dini Townsend Hospital
8. SNAMHS: Rawson-Neal Hospital
9. Adult Forensic Facilities: Restoration Clients
10. Adult Forensic Facilities: Long-term Commitments
11. Adult Forensic Facilities: Evaluation Clients

PHYSICAL RESTRAINT (NUMBER OF HOURS CLIENTS SPENT IN PHYSICAL RESTRAINT FOR EVERY 1000 INPATIENT HOURS), ADULTS

NNAMHS RESTRAINT DATA

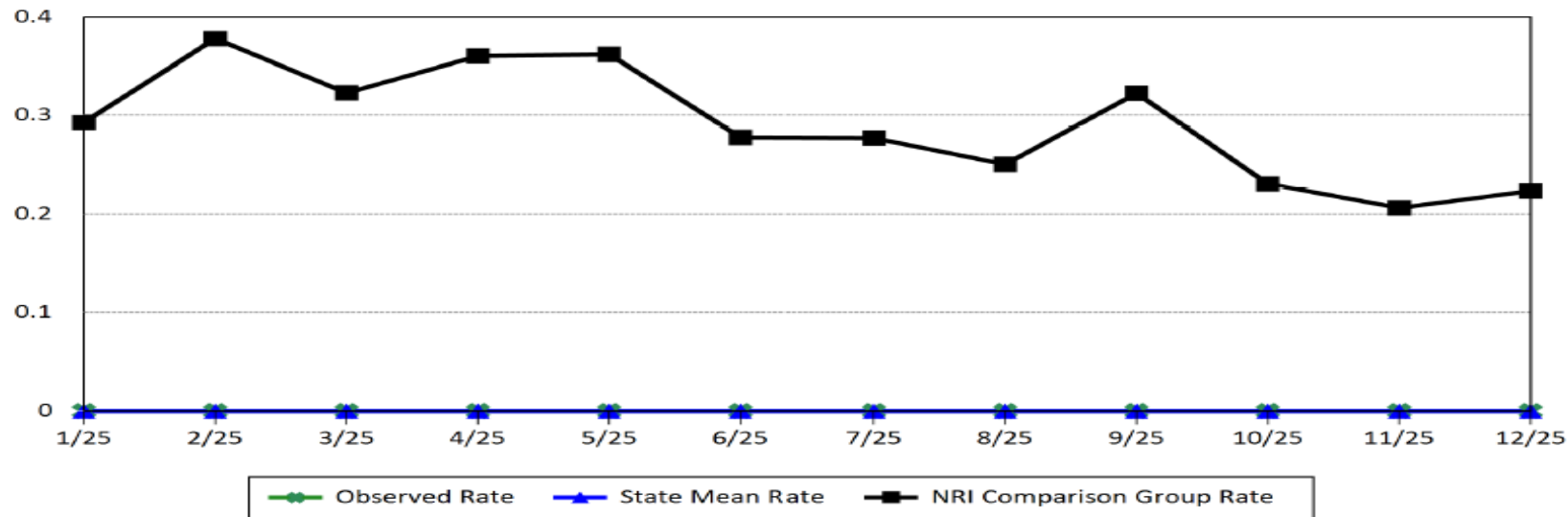
(NRI-HBIPS COMPARATIVE REPORT DECEMBER 2025)



SECLUSION (NUMBER OF HOURS CLIENTS SPENT IN SECLUSION FOR EVERY 1000 INPATIENT HOURS), ADULTS

NNAMHS SECLUSION DATA

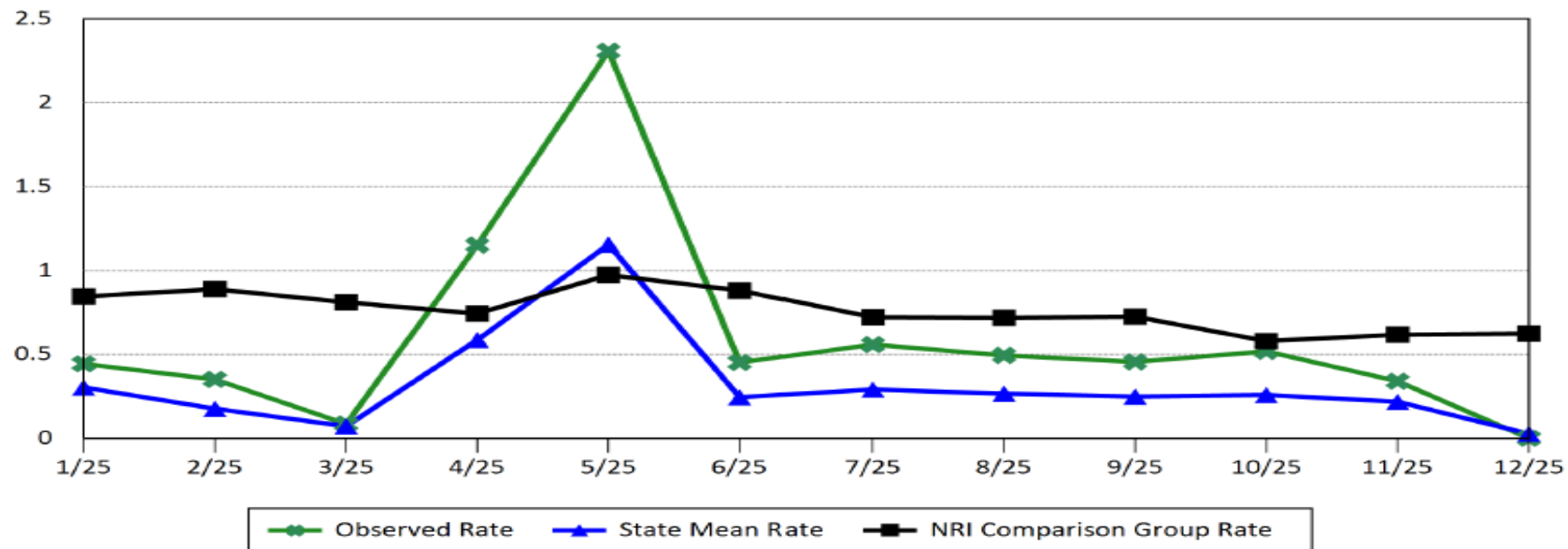
(NRI-HBIPS COMPARATIVE REPORT DECEMBER 2025)



PHYSICAL RESTRAINT (NUMBER OF HOURS CLIENTS SPENT IN PHYSICAL RESTRAINT FOR EVERY 1000 INPATIENT HOURS), ADULTS

SNAMHS RESTRAINT DATA

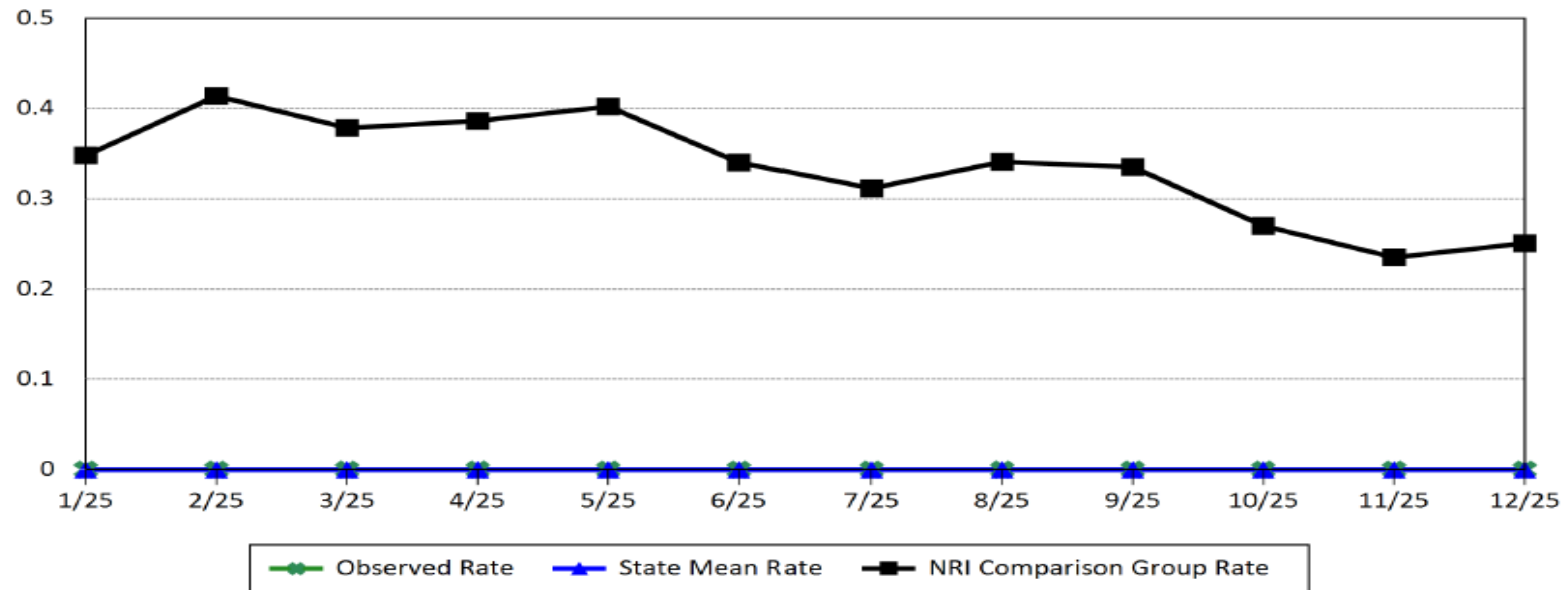
(NRI-HBIPS COMPARATIVE REPORT DECEMBER 2025)



SECLUSION (NUMBER OF HOURS CLIENTS SPENT IN SECLUSION FOR EVERY 1000 INPATIENT HOURS), ADULTS

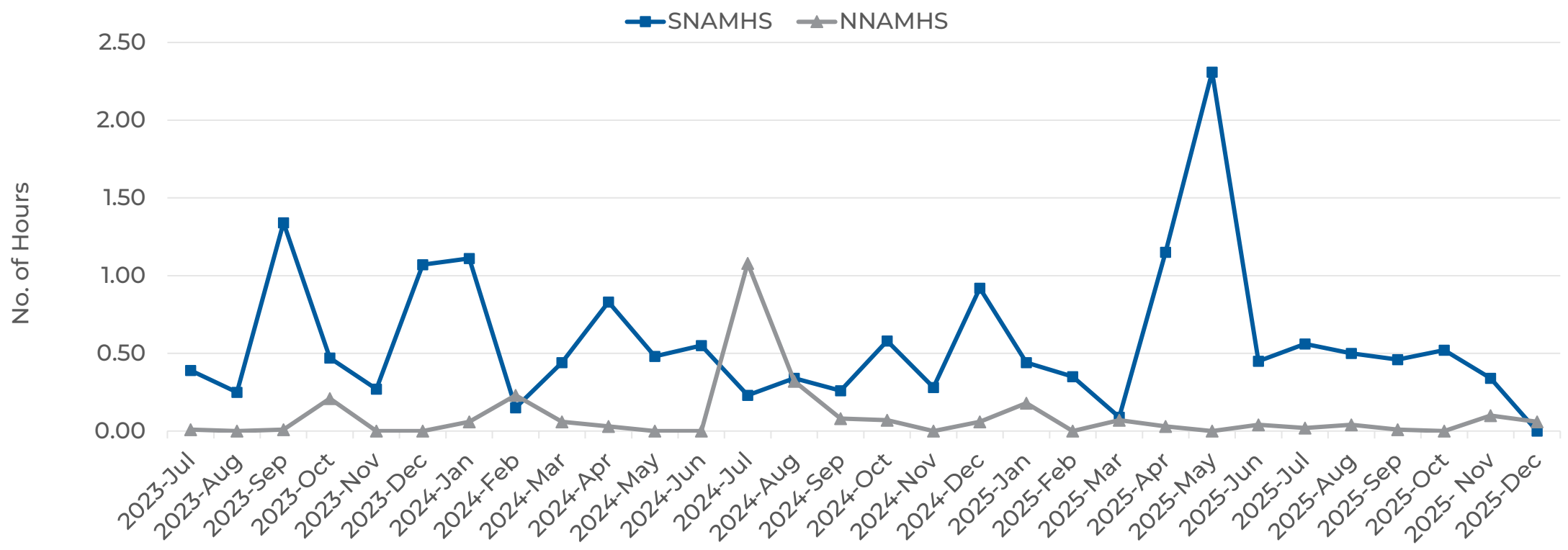
SNAMHS SECLUSION DATA

(NRI-HBIPS COMPARATIVE REPORT DECEMBER 2025)



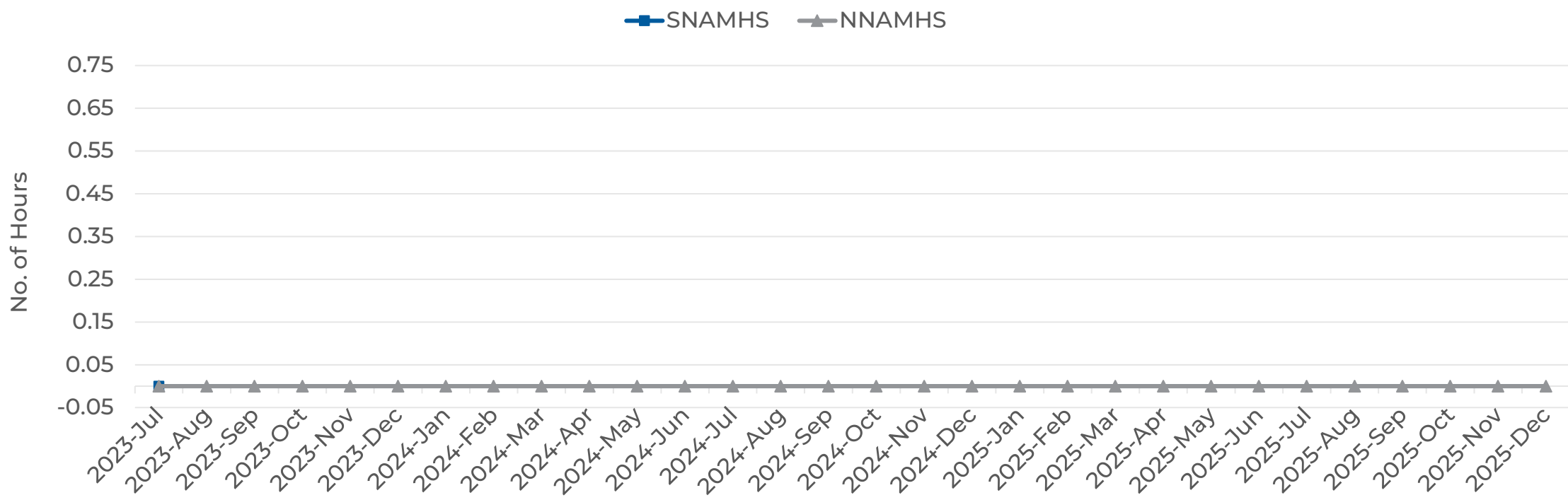
STATEWIDE - Overall Use of Restraints (number of hours clients spent in restraints for every 1000 inpatient hours)

NRI-HBIPS Comparative Report HAP & BHC OCTOBER 2025



STATEWIDE - Overall Use of Seclusion (number of hours clients spent in seclusion for every 1000 inpatient hours)

NRI-HBIPS Comparative Report HAP & BHC OCTOBER 2025



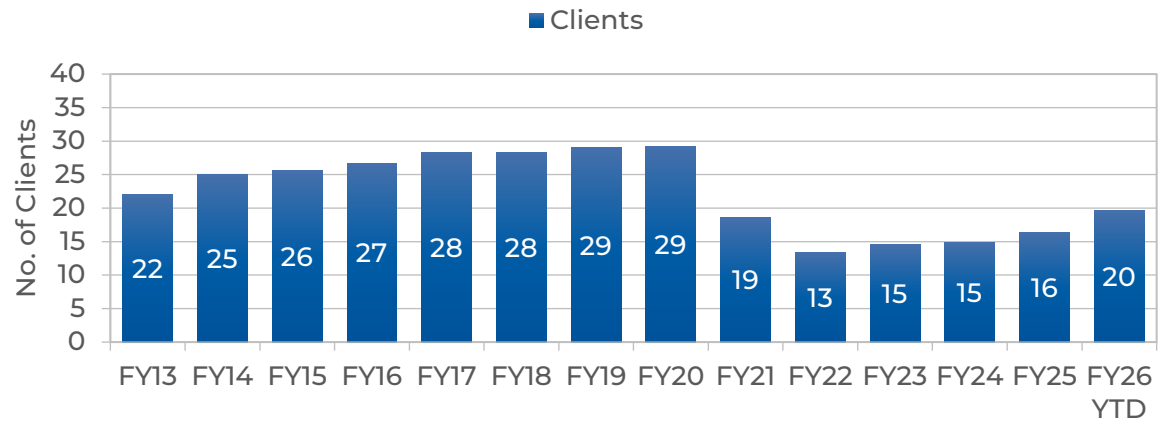
NNAMHS: DINI TOWNSEND HOSPITAL (DHHS Director's Office)



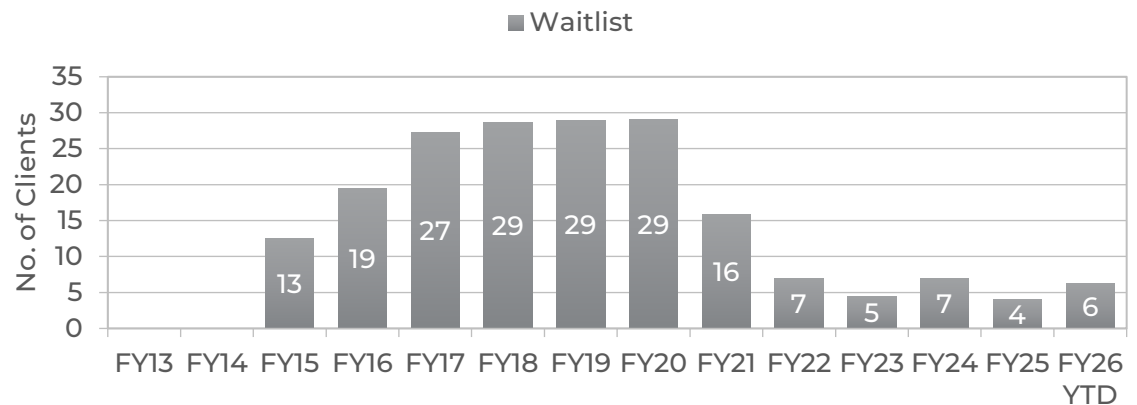
NEVADA DIVISION of PUBLIC
and BEHAVIORAL HEALTH

Month	Clients	Average Length of Stay (Days)	Waitlist
Jul-23	14	8	5
Aug-23	14	74	6
Sep-23	12	78	9
Oct-23	11	68	15
Nov-23	16	15	7
Dec-23	18	22	6
Jan-24	19	31	4
Feb-24	16	38	10
Mar-24	17	24	3
Apr-24	16	26	6
May-24	15	22	4
Jun-24	11	1	8
Jul-24	16	19	1
Aug-24	16	14	5
Sep-24	17	11	4
Oct-24	14	21	4
Nov-24	16	12	4
Dec-24	19	85	4
Jan-25	19	39	2
Feb-25	15	21	2
Mar-25	14	21	0
Apr-25	14	27	9
May-25	18	13	3
Jun-25	19	13	10
Jul-25	17	25	5
Aug-25	17	17	3
Sep-25	20	16	6
Oct-25	19	31	7
Nov-25	21	29	8
Dec-25	23	32	2
Jan-26	20	25	13

NNAMHS Dini-Townsend Clients - Fiscal Year Averages

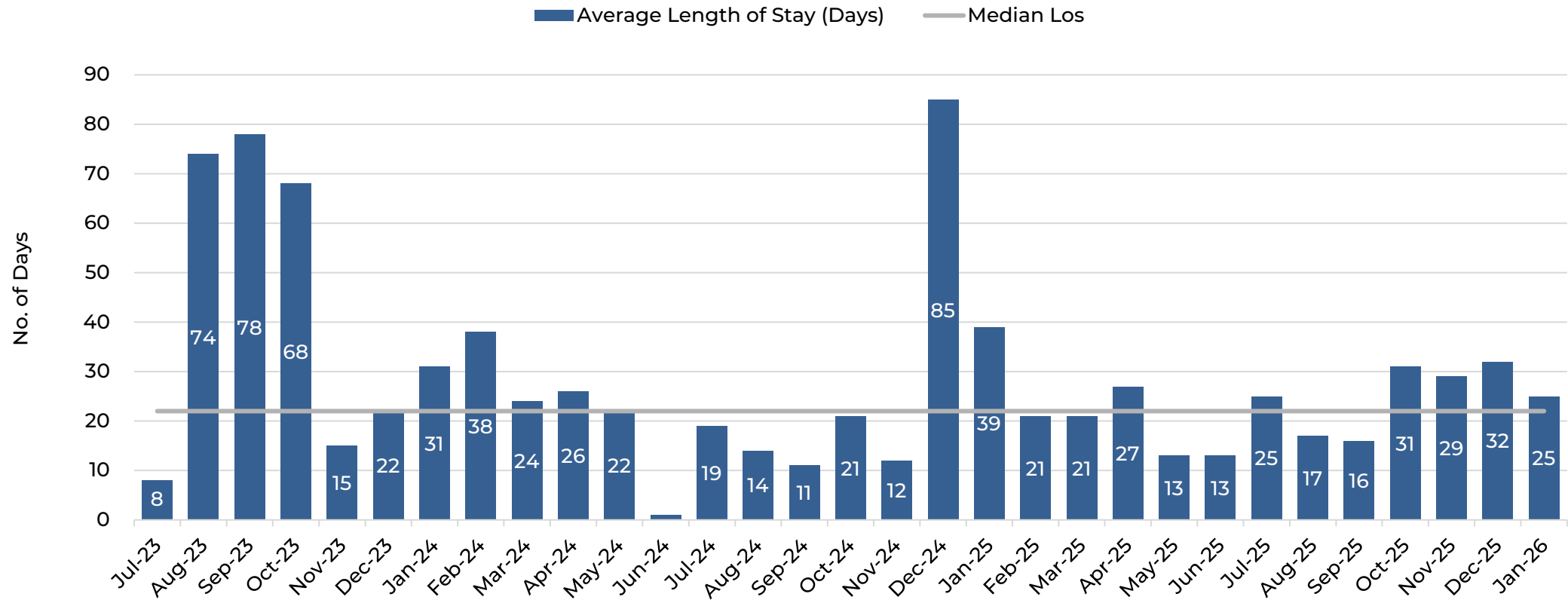


NNAMHS Dini-Townsend Waitlist - Fiscal Year Averages



NNAMHS: DINI TOWNSEND HOSPITAL

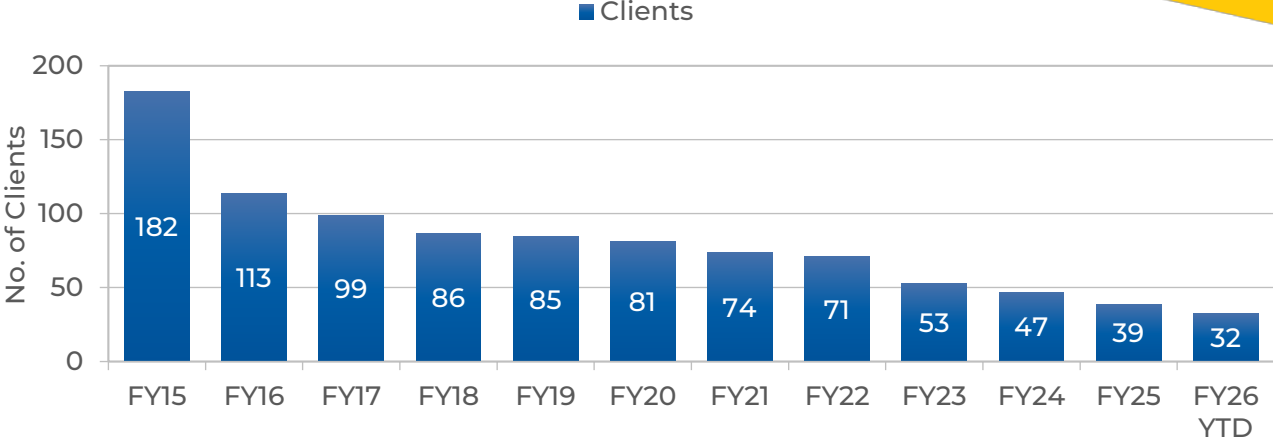
Average Length of Stay (Days)



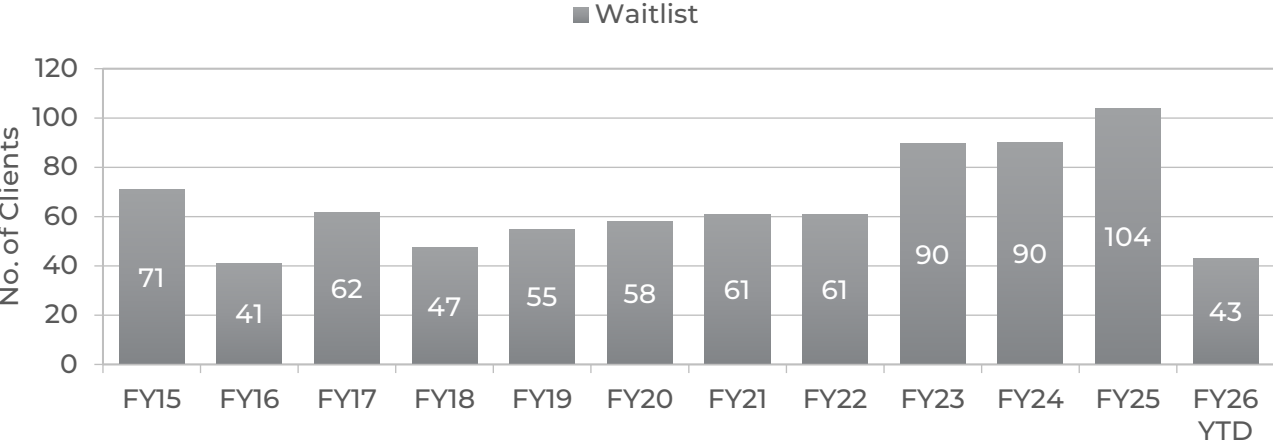
SNAMHS: RAWSON-NEAL HOSPITAL (DHHS Director's Office)

Month	Clients	Average Length of Stay (Days)	Waitlist
Jul-23	50	34	115
Aug-23	48	20	107
Sep-23	46	16	101
Oct-23	42	17	91
Nov-23	46	15	69
Dec-23	47	18	74
Jan-24	45	25	88
Feb-24	47	49	87
Mar-24	49	39	83
Apr-24	49	23	91
May-24	47	23	89
Jun-24	48	15	85
Jul-24	50	25	92
Aug-24	44	19	86
Sep-24	46	38	92
Oct-24	45	34	81
Nov-24	42	20	94
Dec-24	37	32	124
Jan-25	36	32	126
Feb-25	34	34	131
Mar-25	35	26	131
Apr-25	32	20	124
May-25	32	28	96
Jun-25	33	20	68
Jul-25	34	41	58
Aug-25	28	14	35
Sep-25	31	26	43
Oct-25	33	26	41
Nov-25	33	51	43
Dec-25	35	32	43
Jan-26	32	72	38

SNAMHS Rawson-Neal Hospital Clients - Fiscal Year Averages

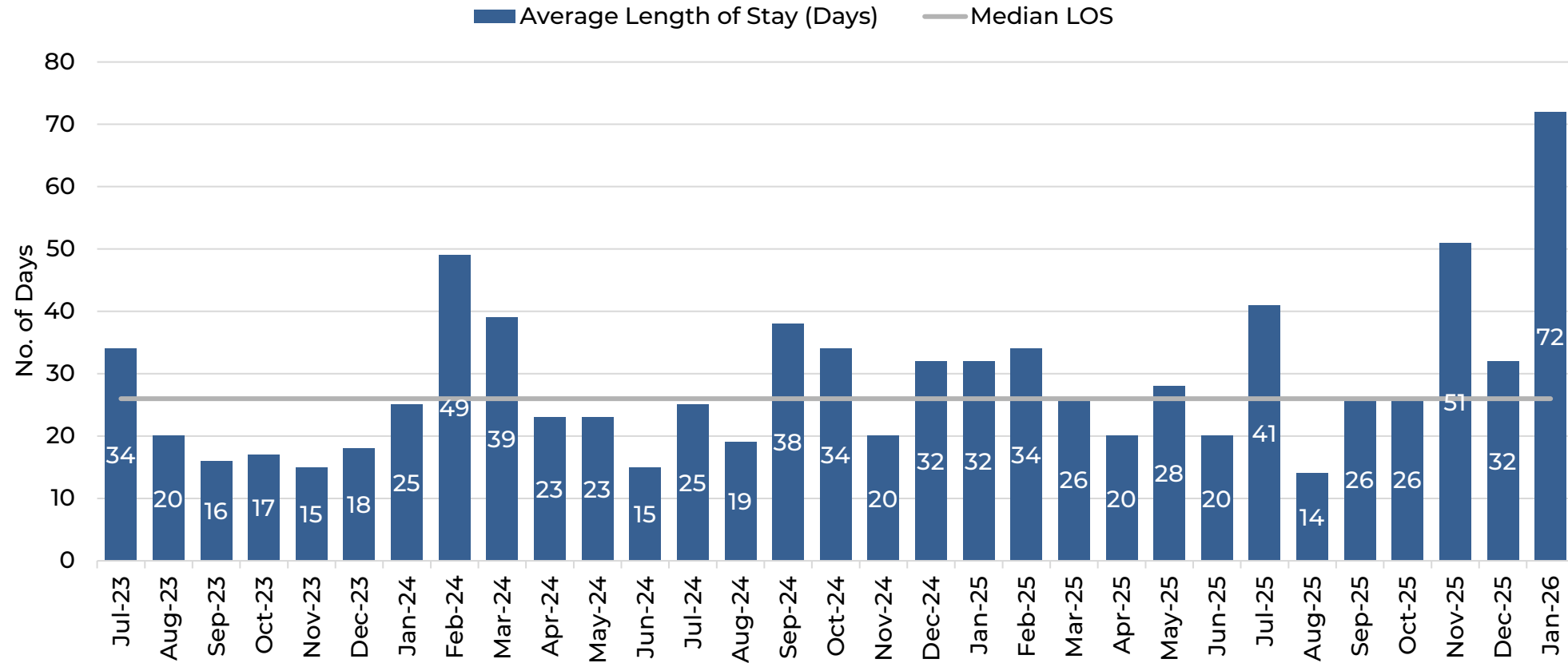


SNAMHS Rawson-Neal Hospital Waitlist - Fiscal Year Averages



SNAMHS: RAWSON-NEAL HOSPITAL

Average Length of Stay (Days)



ADULT FORENSIC: RESTORATION CLIENTS (DHHS Director's Office)

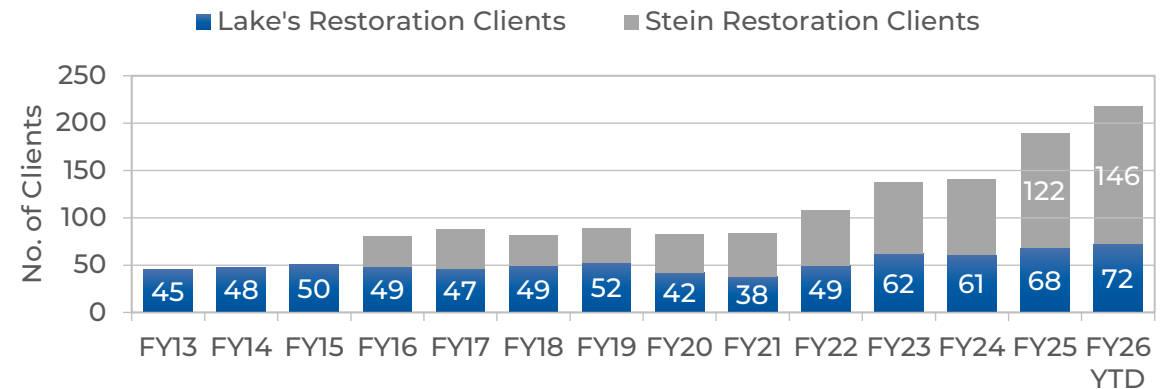


NEVADA DIVISION of PUBLIC
and BEHAVIORAL HEALTH

Month	Lake's Restoration Clients	Lake's Average Length of Stay (Days)	Stein Restoration Clients	Stein Average Length of Stay (Days)	Statewide Restoration Waitlist	Statewide Average Wait (Days)
Jul-23	55	109	66	100	138	66
Aug-23	56	90	69	124	128	60
Sep-23	59	110	81	83	117	56
Oct-23	58	91	83	105	121	52
Nov-23	59	88	79	88	136	57
Dec-23	55	115	75	142	131	60
Jan-24	57	111	75	127	117	62
Feb-24	64	111	77	105	122	69
Mar-24	71	97	75	82	107	56
Apr-24	60	122	79	109	101	49
May-24	63	104	95	102	99	56
Jun-24	71	107	108	159	109	52
Jul-24	68	105	115	98	96	43
Aug-24	66	88	123	85	105	45
Sep-24	60	128	120	127	94	46
Oct-24	65	100	121	133	93	47
Nov-24	67	166	117	135	63	40
Dec-24	63	126	123	151	70	45
Jan-25	66	126	125	83	64	40
Feb-25	67	118	122	111	78	34
Mar-25	67	113	125	143	96	47
Apr-25	71	158	123	137	91	43
May-25	78	188	123	137	109	34
Jun-25	75	108	126	149	150	44
Jul-25	73	98	136	123	164	46
Aug-25	80	90	144	98	166	50
Sep-25	78	100	145	112	162	49
Oct-25	74	99	148	135	172	53
Nov-25	71	103	148	108	175	52
Dec-25	68	103	148	125	205	62
Jan-26	60	131	150	114	192	61

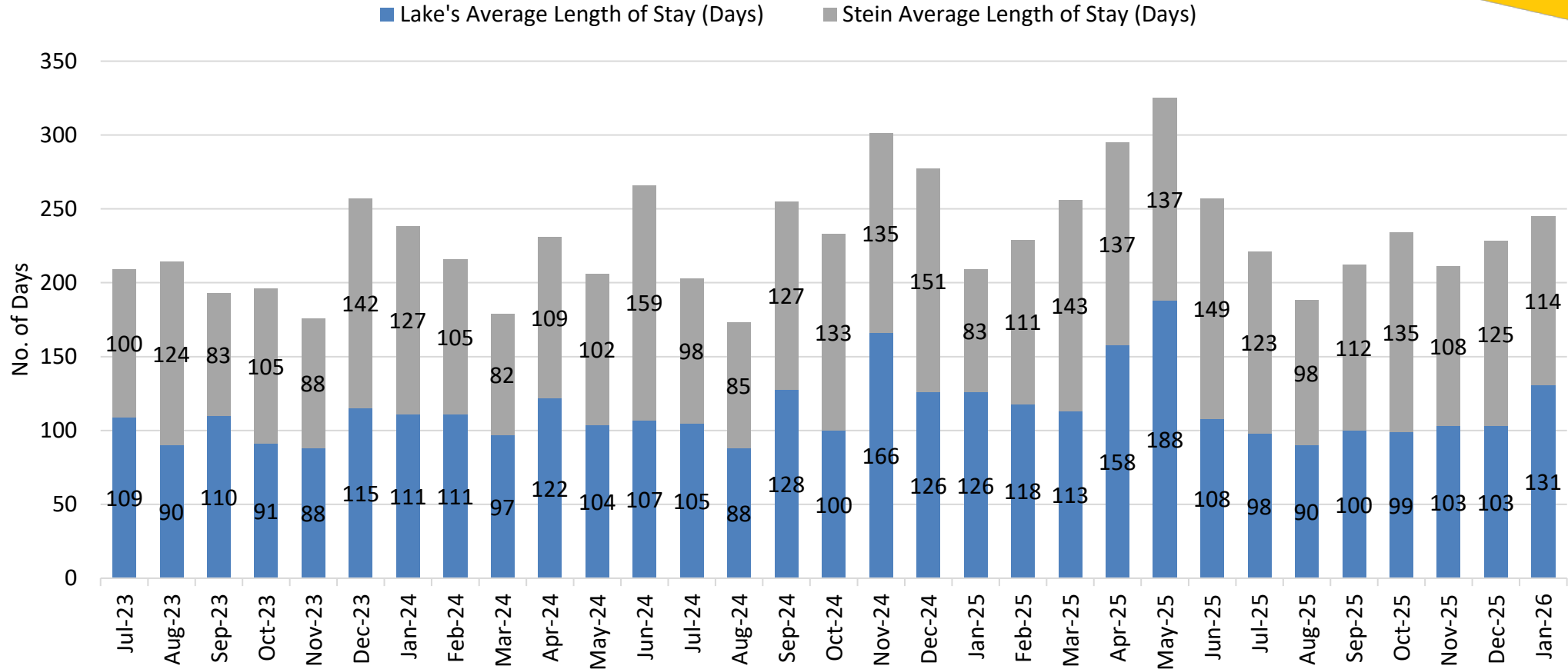
Fiscal Year Averages	Lake's Restoration Clients	Lake's Average Length of Stay (Days)	Stein Restoration Clients	Stein Average Length of Stay (Days)	Statewide Restoration Waitlist	Average Wait (Days)
FY13	45	81				
FY14	48	96				
FY15	50	92				
FY16	49	108	32	88	17	24
FY17	47	97	42	105	18	5
FY18	49	101	33	94	16	5
FY19	52	104	37	73	18	5
FY20	42	99	41	74	16	5
FY21	38	104	46	89	20	4
FY22	49	134	58	102	64	8
FY23	62	112	76	101	132	45
FY24	61	105	80	111	119	58
FY25	68	127	122	124	92	42
FY26 YTD	72	103	146	116	177	53

Restoration Clients - Fiscal Year Averages



ADULT FORENSIC: RESTORATION CLIENTS

Average Length of Stay (Days)



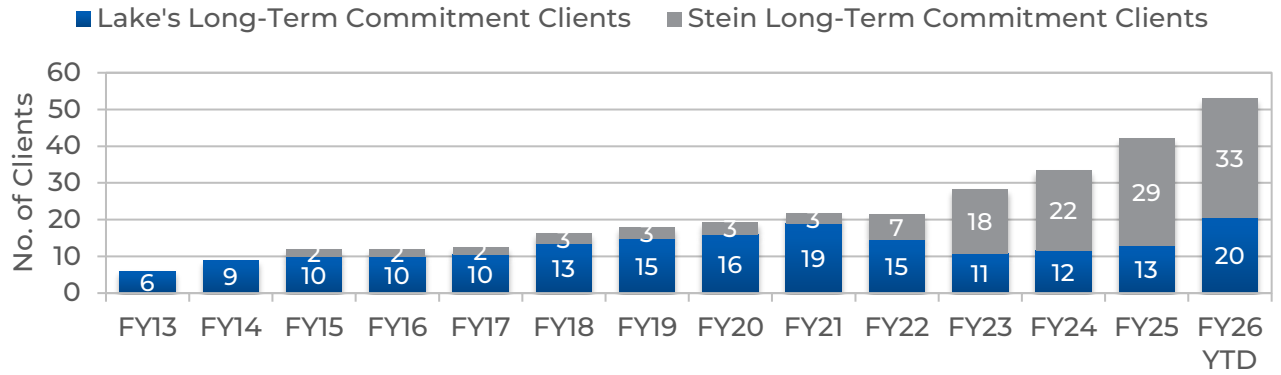


ADULT FORENSIC: LONG-TERM COMMITMENTS (DHHS Director's Office)

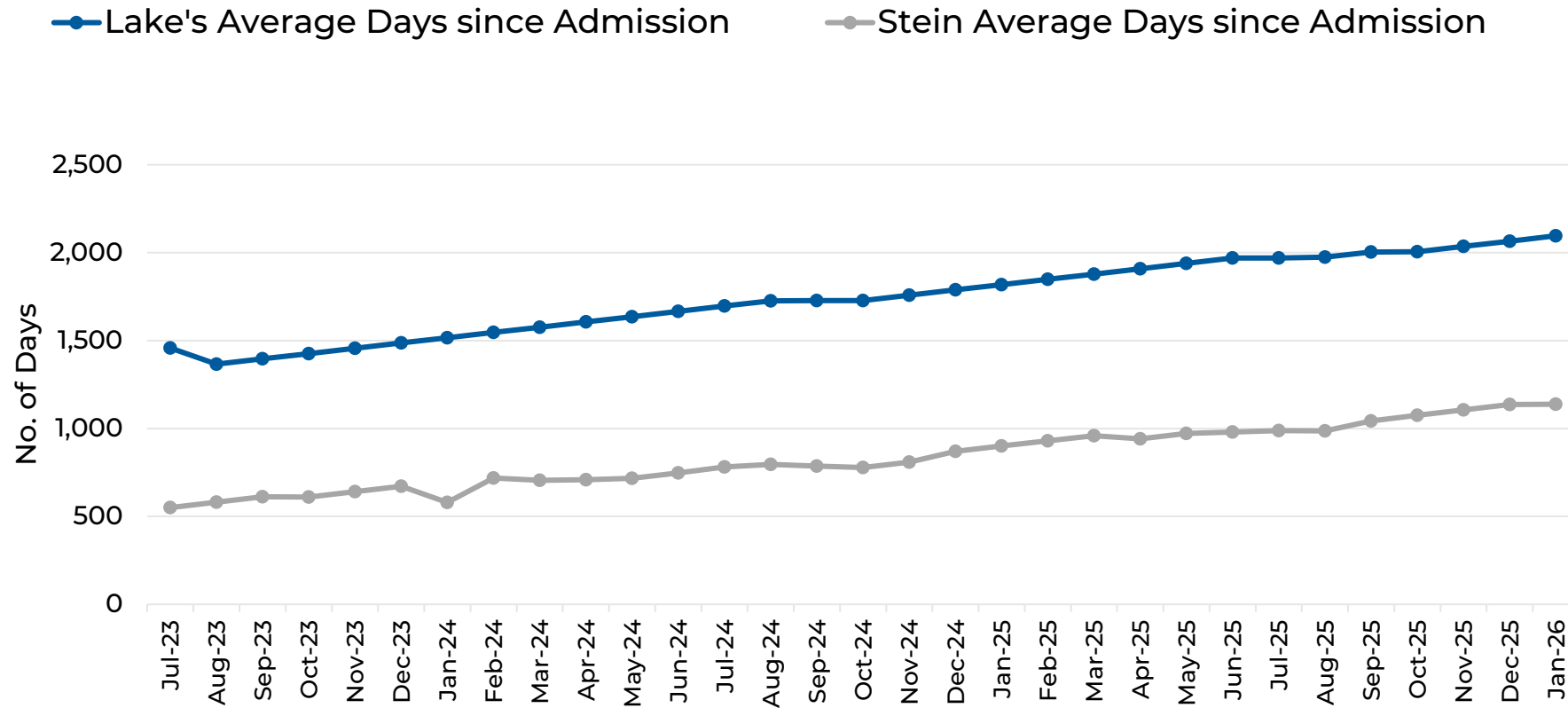
Month	Lake's Long Term Commitment Clients	Lake's Average Days since Admission	Stein Long Term Commitment Clients	Stein Average Days since Admission
Jul-23	11	1,457	18	550
Aug-23	12	1,366	18	581
Sep-23	12	1,396	18	611
Oct-23	12	1,426	20	610
Nov-23	12	1,456	20	640
Dec-23	12	1,486	20	671
Jan-24	12	1,516	22	580
Feb-24	11	1,546	23	718
Mar-24	11	1,576	26	705
Apr-24	11	1,606	27	709
May-24	12	1,636	25	717
Jun-24	11	1,666	25	747
Jul-24	13	1,696	26	782
Aug-24	12	1,726	27	795
Sep-24	13	1,727	29	786
Oct-24	14	1,728	32	778
Nov-24	13	1,758	32	808
Dec-24	13	1,788	29	870
Jan-25	13	1,818	29	901
Feb-25	13	1,848	29	929
Mar-25	12	1,878	28	959
Apr-25	12	1,908	30	941
May-25	12	1,939	30	972
Jun-25	14	1,969	31	980
Jul-25	13	1,970	32	988
Aug-25	16	1,974	34	987
Sep-25	14	2,004	33	1,042
Oct-25	23	2,005	32	1,075
Nov-25	25	2,035	32	1,105
Dec-25	26	2,065	32	1,136
Jan-26	26	2,096	33	1,138

Fiscal Year Averages	Lake's Long Term Commitment Clients	Lake's Average Days since Admission	Stein Long Term Commitment Clients	Stein Average Days since Admission
FY13	6	1,260		
FY14	9	1,207		
FY15	10	1,423	2	
FY16	10	1,660	2	250
FY17	10	1,699	2	615
FY18	13	1,656	3	767
FY19	15	1,825	3	1,112
FY20	16	2,011	3	1,314
FY21	19	1,909	3	1,406
FY22	15	2,282	7	421
FY23	11	1,586	18	377
FY24	12	1,511	22	653
FY25	13	1,815	29	875
FY26 YTD	20	2,021	33	1,067

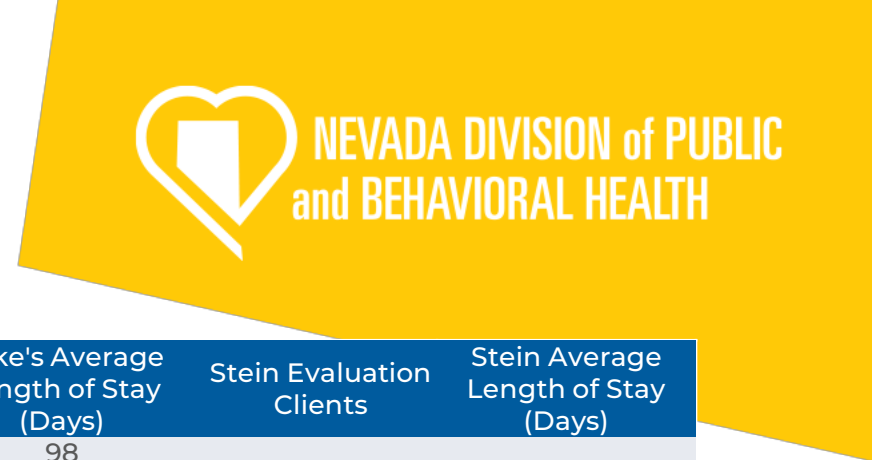
Long-Term Commitments - Fiscal Year Averages



ADULT FORENSIC: LONG-TERM COMMITMENTS (Days Since Admission)



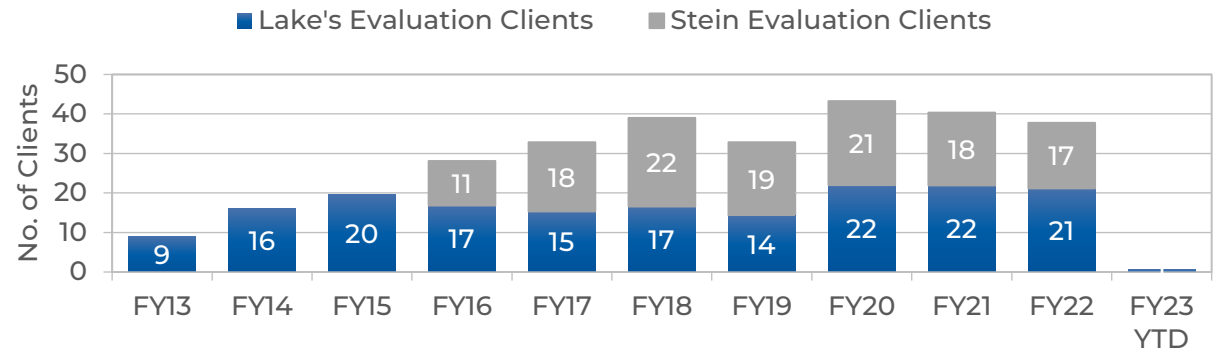
ADULT FORENSIC: EVALUATION CLIENTS (DHHS Director's Office)



Month	Lake's Evaluation Clients	Lake's Average Length of Stay (Days)	Stein Evaluation Clients	Stein Average Length of Stay (Days)
Jul-21	17	83	25	71
Aug-21	17	48	27	89
Sep-21	20	95	28	88
Oct-21	16	79	25	81
Nov-21	21	122	22	96
Dec-21	24	245	15	88
Jan-22	27	84	18	96
Feb-22	32	100	18	51
Mar-22	31	105	13	63
Apr-22	28	130	7	112
May-22	13	162	1	98
Jun-22	8	147	0	245
Jul-22	3	287	0	n/a
Aug-22	2	n/a	0	n/a
Sep-22	0	n/a	0	n/a
Oct-22	0	n/a	0	n/a
Nov-22	0	n/a	0	n/a
Dec-22	0	n/a	0	n/a
Jan-23	0	n/a	0	n/a
Feb-23	0	n/a	0	n/a
Mar-23	0	n/a	0	n/a

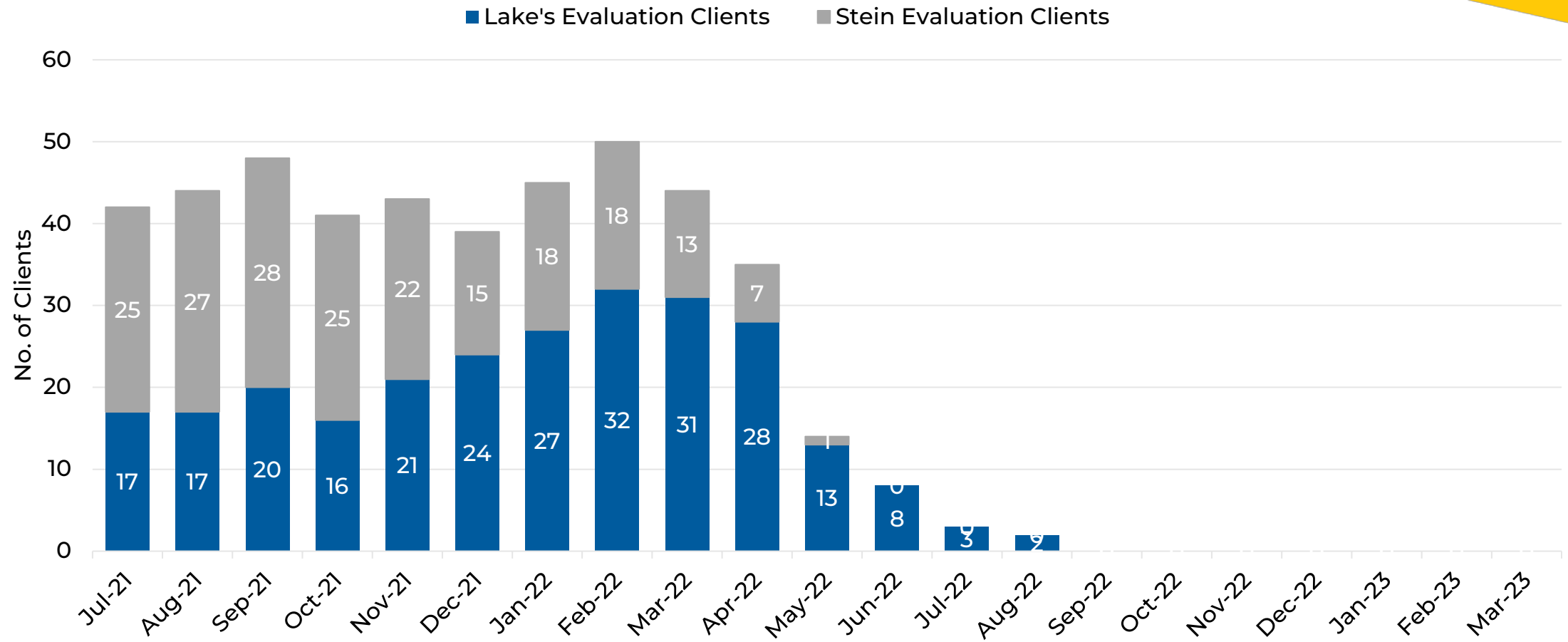
Fiscal Year Averages	Lake's Evaluation Clients	Lake's Average Length of Stay (Days)	Stein Evaluation Clients	Stein Average Length of Stay (Days)
FY13	9	98		
FY14	16	61		
FY15	20	94		
FY16	17	84	11	88
FY17	15	90	18	89
FY18	17	75	22	89
FY19	14	86	19	78
FY20	22	87	21	65
FY21	22	104	18	79
FY22	21	117	17	98
FY23 YTD	1	291	n/a	n/a

Evaluation Clients - Fiscal Year Averages



ADULT FORENSIC: EVALUATION CLIENTS

Number of Clients



QUESTIONS?



**NEVADA DIVISION of PUBLIC
and BEHAVIORAL HEALTH**



CONTACT INFORMATION

Andrea R. Rivers, MS

DPBH Administrator
a.rivers@health.nv.gov

Susan Lynch, MBA

SNAMHS Hosp. Administrator
slynch@health.nv.gov

ACRONYMS

- NNAMHS – Northern Nevada Adult Mental Health Services
- SNAMHS – Southern Nevada Adult Mental Health Services
- HBIPS – Hospital-Based Inpatient Psychiatric Services
- BHC – Behavioral Health Care
- HAP – Hospital Accreditation Program
- FY – Fiscal Year
- YTD – Year to Date
- DHHS – Department of Health and Human Services



**NEVADA DIVISION of PUBLIC
and BEHAVIORAL HEALTH**