

DHS Director
 Laura Rich

BA: 3223 / PCN:2025
 Rivers, Andrea
 Division Administrator
 Grd Unclass * FTE 1 * CC

BA: 3223 / PCN:160
 Vezmar, Daniel
 Public Information Officer 1
 Grd 35 * FTE 1 * LV

BA: 3223 / PCN:4
 Knutzon, Kelli
 Executive Assistant
 Grd Unclass * FTE 1 * CC

BA: 3161 / PCN: 16
 Ravin, Leon
 State Psych Med Director
 Unclass * FTE: 1 * LV

BA: 3223 / PCN:2038
 Azzam, Ihsan
 Chief Medical Officer
 Grd Unclass * FTE 1 * CC

BA: 3223 / PCN:17
 Borrowman, John
 Deputy Administrator
 Grd Unclass * FTE 1 * CC

BA: 3223 / PCN:721
 Peek, Julia
 Deputy Administrator
 Grd Unclass * FTE 1 * CC

BA: 3234 / PCN: 225
 DeValliere, Mitch
 Agency Manager (Ea)
 Grd Unclass * FTE 1 * CC

BA: 3168 / PCN:10
 Dillinger, Ronna
 Deputy Administrator
 Grd Unclass * FTE 1 * LV

BA: 3645 / PCN: 400
 Cross, Drew
 Statewide Forensic Director
 Unclass * FTE: 1 * SP

BA: 3223 / PCN:508
 Bullock, Melissa
 Medical Epidemiologist
 Grd Unclass * FTE 1 * CC

Fiscal Services
 Public Health

Community Health Nursing

Public Health Infrastructure
 and Improvement

Northern Nevada Adult
 Mental Health Services
 (NNAMHS)

Stein

Office of State Epidemiology

Fiscal Services
 Behavioral Health

Bureau of Child, Family,
 And Community Wellness

Primary Care Office

Southern Nevada Adult
 Mental Health Services
 (SNAMHS)

Lakes Crossing center
 (LCC)

Health Protection &
 Preparedness

HIV Program

Rural Clinics

BA: 3648 / PCN:102
 Altman, Annette
 Chief Operations Officer
 Grd Unclass * FTE 1 * CC

Behavioral Health,
 Wellness, and Prevention

Office of Information
 Technology

Human Resources

Org Chart for
 Office of State Epidemiology

Division of Public & Behavioral Health
 Community Health
 Office of State Epidemiology
 (Page 2)

BA: 3223 / PCN:2025
 Rivers, Andrea
 Division Administrator
 Grd Unclass * FTE 1 * CC

Executive Assistant

BA: 3223 / PCN:508
 Bullock, Melissa
 Medical Epidemiologist
 Grd Unclass * FTE 1 * CC

CDC Epidemic Intelligence
 Surveillance Officer (EISO)

Local/Jurisdictional Liaison
 CDCF

CDC Career Epidemiology
 Field Officer

BA: 3219 / PCN:3
 Beard, Cindy
 State Epidemiologist
 Grd Unclass * FTE 1 * RE

Environmental Health

Chronic Disease

Additional Programs
 (Page 5)

Special Populations

Communicable Disease
 (Page 3)

Surveillance

Health Facilities
 (Page 4)

Environmental Health
 Specialist

Epidemiologist

BA: 3219 / PCN:48
 Griffin, Kagan
 Health Program Manager 2
 Grd 39 * FTE 1 * RE

Epidemiologist

BA: 3219 / PCN: 150
 Vacant (not reflected in
 HRDW)
 Health Program Manager 2
 Grd 39 * FTE 1 * RE

BA: 3219 / PCN:70
 Kessler, Elizabeth
 Health Program Specialist 1
 Grd 35 * FTE 1 * RE

BA: 3219 / PCN:420
 Collins, Clarence
 Health Program Specialist 2
 Grd 37 * FTE 1 * LV

Epidemiologist, One Health

Epidemiologist

Epidemiologist

BA: 3219 / PCN:4
 Johnson, Susan
 Health Program Specialist 1
 Grd 35 * FTE 1 * CC

Epidemiologist

Epidemiologist

BA: 3219 / PCN: 15
 Torrez, Ashlyn
 Health Program Specialist 1
 Grd * FTE *

Epidemiologist

CDC Epidemiologist

Health Resource Analyst II,
 Lead Program Coordinator

Division of Public & Behavioral Health
Community Health
State Office of Epidemiology
Communicable Disease
(Page 3)

BA: 3223 / PCN:508
Bullock, Melissa
Medical Epidemiologist
Grd Unclass * FTE 1 * CC

Branch, Aja
Executive Assistant
FTE: 1**CDC

BA: 3219 / PCN:3
Beard, Cindy
State Epidemiologist
Grd Unclass * FTE 1 * RE

BA: 3219 / PCN: 150
Vacant (not reflected in HRDW)
Health Program Manager 2
Grd 39 * FTE 1 * RE

Statewide Epidemiology
Unit

Wegenèr, Max
Epidemiologist Syndromic
Surveillance

Savarda, Salena
Epidemiologist

Gbafa, Patience
CDC Epidemiologist

Gutierrez, Karen
CDC Epidemiologist

Goldstein, Trista
Public Health Nurse

Shepard, Riley
Epidemiology Liaison CDCF

Ponce, Melba
Health Program Specialist I

Perez, Aaron
Health Program Specialist I,
ICCR Clerk

Rural Disease Investigation
Unit

BA: 3219 / PCN:117
Tang, Preston
Health Program Specialist 1
Grd 35 * FTE 1 * CC

BA: 3219 / PCN:36
Contreras, Daisy
Disease Control Specialist 2
Grd 33 * FTE 1 * RE

BA: 3219 / PCN:138
Sagadraca, Lawrence
Disease Control Specialist 2
Grd 33 * FTE 1 * RE

Stephenson, Drew
Health Program Specialist I

Boyles, Christina
Health Program Specialist I

Alonzo, Fernanda
Disease Investigator

Solomo, Lauro

Division of Public & Behavioral Health
Community Health
State Office of Epidemiology
Health Facilities

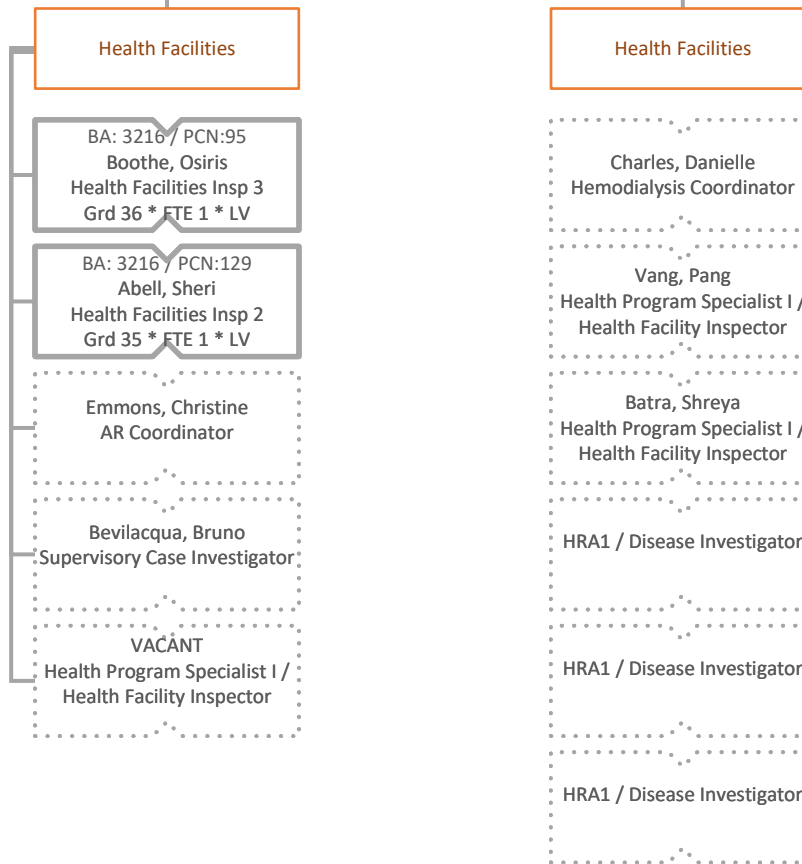
(Page 4)

BA: 3223 / PCN:508
Bullock, Melissa
Medical Epidemiologist
Grd Unclass * FTE 1 * CC

Branch, Aja
Executive Assistant
FTE: 1**CDC

BA: 3219 / PCN:3
Beard, Cindy
State Epidemiologist
Grd Unclass * FTE 1 * RE

BA: 3219 / PCN:420
Collins, Clarence
Health Program Specialist 2
Grd 37 * FTE 1 * LV

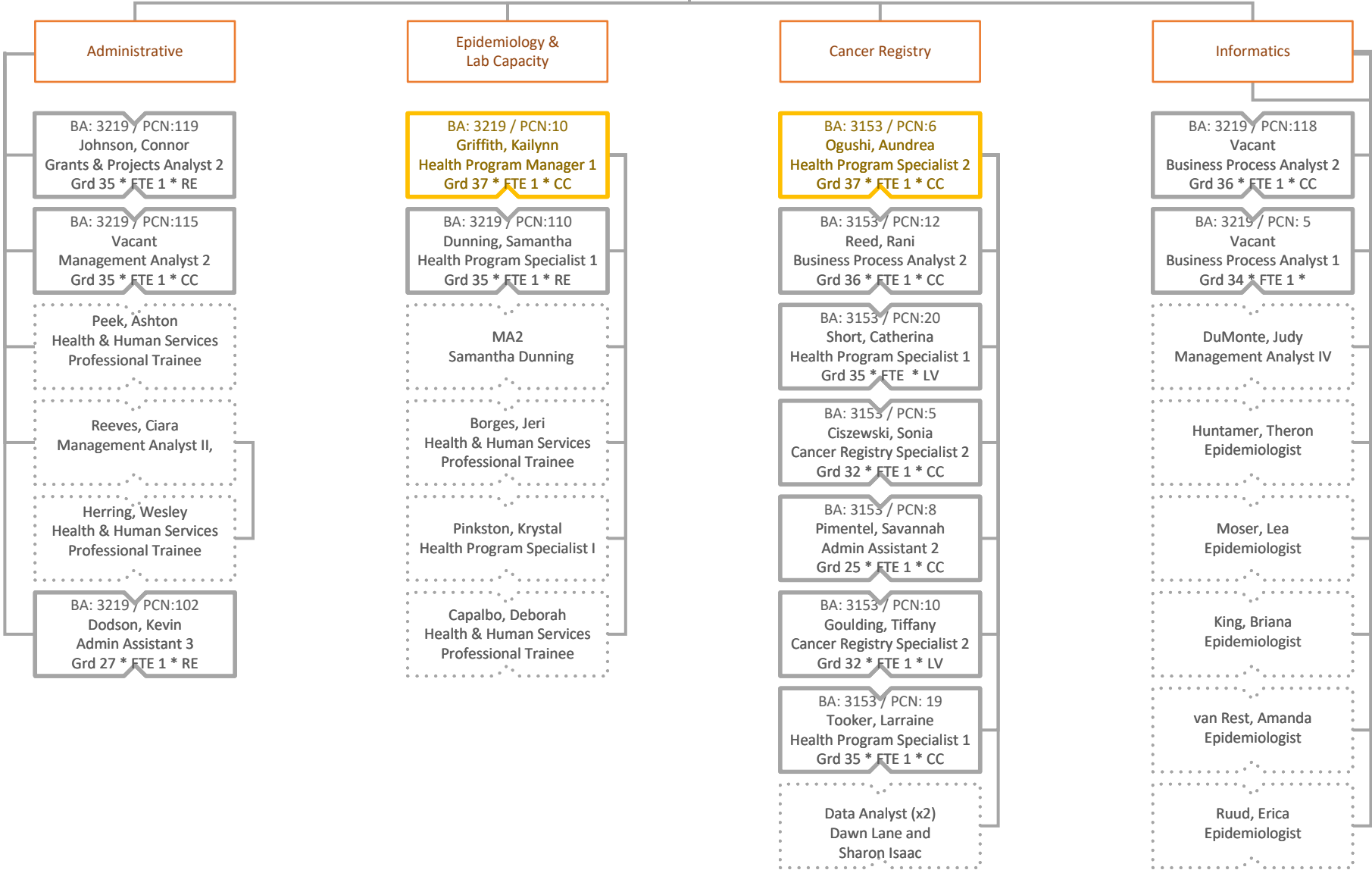


Division of Public & Behavioral Health
 Community Health
 State Office of Epidemiology
 Additional Programs
 (Page 5)

BA: 3223 / PCN:508
 Bullock, Melissa
 Medical Epidemiologist
 Grd Unclass * FTE 1 * CC

Branch, Aja
 Executive Assistant
 FTE: 1**CDC

BA: 3219 / PCN:48
 Griffin, Kagan
 Health Program Manager 2
 Grd 39 * FTE 1 * RE



Division of Public & Behavioral Health
Bureau of Health Protection and Preparedness
Administration
(Page 6)

BA: 3223 / PCN:508
Bullock, Melissa
Medical Epidemiologist
Grd Unclass * FTE 1 * CC

BA: 3223 / PCN:2038
Azzam, Ihsan
Chief Medical Officer
Grd Unclass * FTE 1 * CC

BA: 3190 / PCN:27
Hadlock-Burnett, Janice
Health Bureau Chief
Grd 42 * FTE 1 * CC

BA: 3218 / PCN:130
Eckert, Isabelle
Admin Assistant 4
Grd 29 * FTE 1 * CC

BA: 3218 / PCN:90
Allen, Donielle
Health Program Manager 2
Grd 39 * FTE 1 * CC

BA: 3235 / PCN:3
Sullivan, Bobbie
Emergency Medical Svcs Rep 3
Grd 35 * FTE 1 * EK

BA: 3101 / PCN:24
Follette, John
Radiation Control Manager
Grd 40 * FTE 1 * LV

BA: 3190 / PCN:31
Mead, Monica
Program Officer 3
Grd 35 * FTE 1 * CC

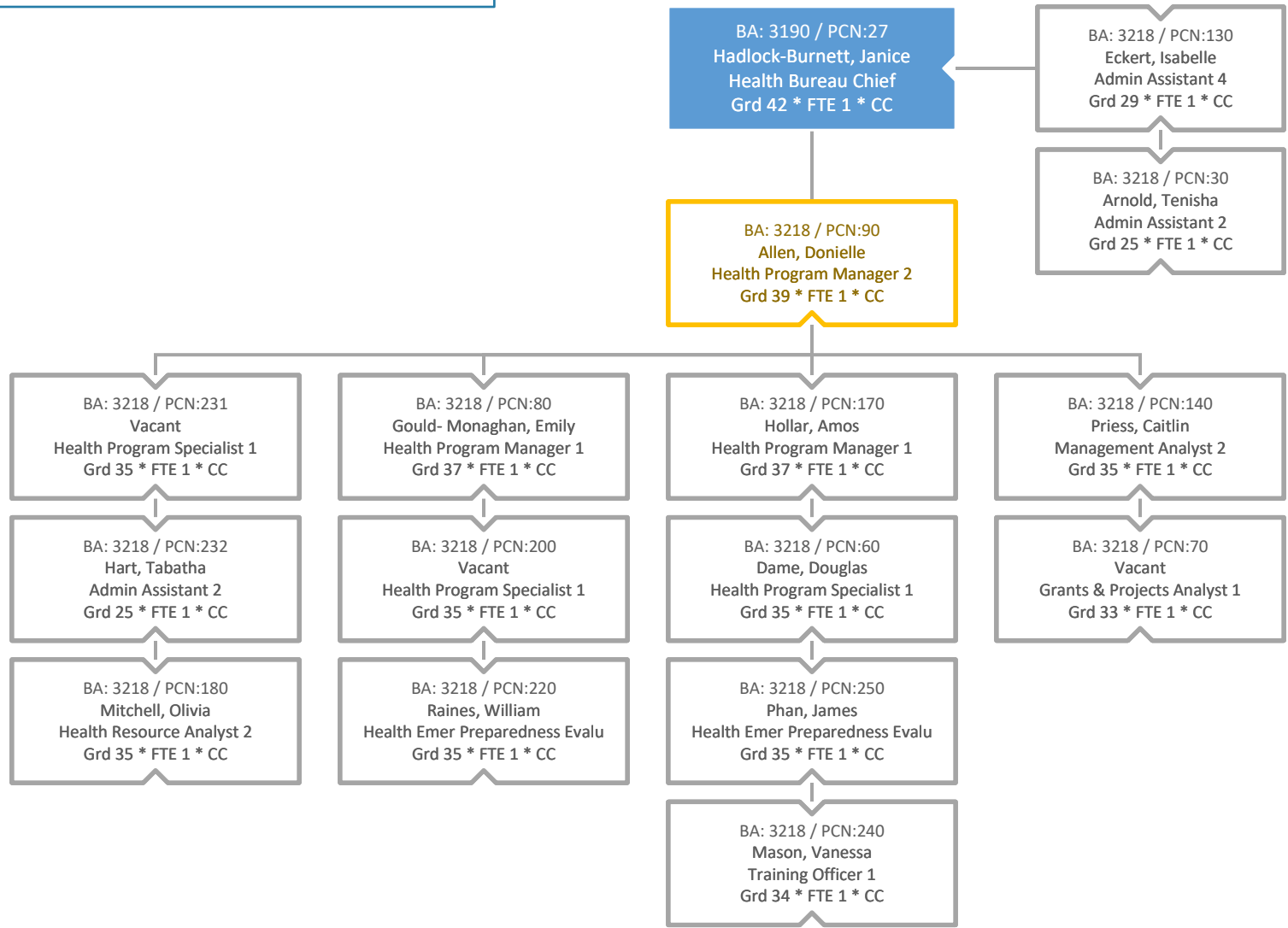
Public Health Preparedness
(Pg. 6a)

Emergency Medical Systems
(Pg. 6b)

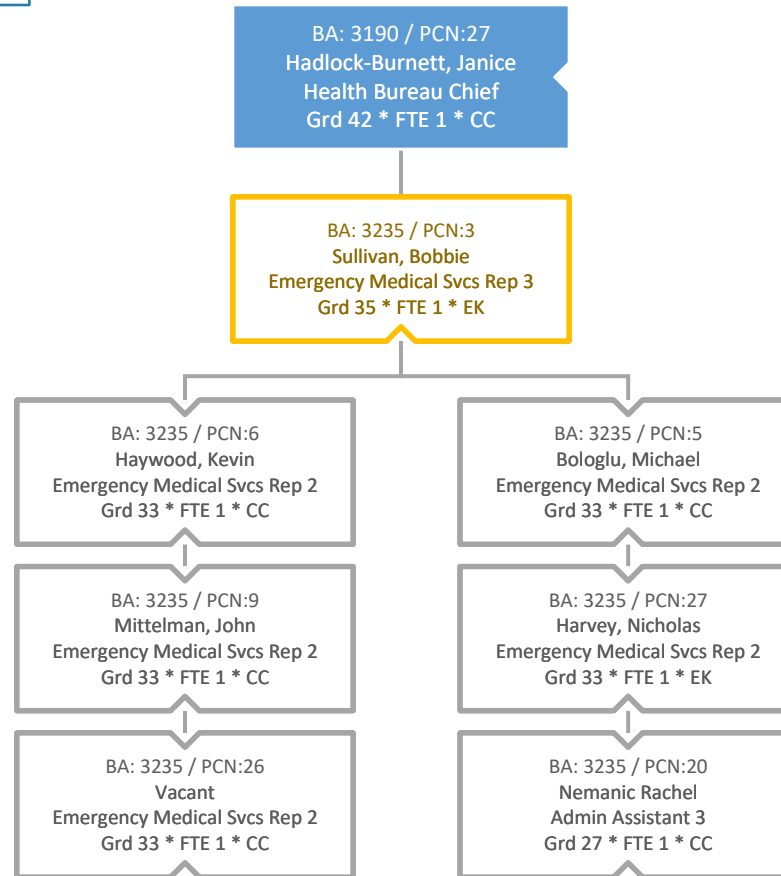
Radiation Control Program
(Pg. 6c)

Office of Vital Records
(Pg. 6b)

Division of Public & Behavioral Health
 Bureau of Health Protection and Preparedness
 Public Health Preparedness
 (Page 6a)



Division of Public & Behavioral Health
Bureau of Health Protection and Preparedness
Emergency Medical Services
(Page 6b)



Division of Public & Behavioral Health
 Bureau of Health Protection and Preparedness
 Radiation Control Program

(Page 6c)

BA: 3190 / PCN:27
 Hadlock-Burnett, Janice
 Health Bureau Chief
 Grd 42 * FTE 1 * CC

BA: 3101 / PCN:24
 Follette, John
 Radiation Control Manager
 Grd 40 * FTE 1 * LV

BA: 3101 / PCN:16
 Gorman, Bill
 Admin Assistant 3
 Grd 27 * FTE 1 * LV

BA: 3101 / PCN:80
 Creveling, Corey
 Radiation Control Supervisor
 Grd 38 * FTE 1 * CC

BA: 3101 / PCN:75
 Woodburn, Ron
 Radiation Control Supervisor
 Grd 38 * FTE 1 * CC

BA: 3101 / PCN:52
 Chapman, Yvette
 Radiation Control Supervisor
 Grd 38 * FTE 1 * CC

BA: 3101 / PCN:37
 Caruana, Karen
 Admin Assistant 2
 Grd 25 * FTE 1 * CC

BA: 3101 / PCN:14
 Mena, Shannon
 Radiation Control Specialist 3
 Grd 37 * FTE 1 * LV

BA: 3101 / PCN:79
 Hallam, Reid
 Radiation Control Specialist 2
 Grd 35 * FTE 1 * CC

BA: 3101 / PCN:83
 Passalacqua, Matthew
 Radiation Control Specialist 3
 Grd 37 * FTE 1 * LV

BA: 3101 / PCN:55
 Ackermann, Daren
 Radiation Control Specialist 3
 Grd 37 * FTE 1 * LV

BA: 3101 / PCN:56
 Talamantes, Natalie
 Admin Assistant 2
 Grd 25 * FTE 1 * CC

BA: 3101 / PCN:84
 Walters, Jaime
 Radiation Control Specialist 3
 Grd 37 * FTE 1 * LV

BA: 3101 / PCN:101
 Bernard, Georgina
 Management Analyst 2
 Grd 35 * FTE 1 * CC

BA: 3101 / PCN:77
 Sorensen, Leslie
 Radiation Control Specialist 2
 Grd 35 * FTE 1 * LV

BA: 3101 / PCN:35
 Griffin, Timothy
 Radiation Control Specialist 2
 Grd 35 * FTE 1 * LV

BA: 3101 / PCN:89
 Johnson, Timothy
 Admin Assistant 2
 Grd 25 * FTE 1 * CC

BA: 3101 / PCN:76
 Hoffman, Hannah
 Radiation Control Specialist 3
 Grd 37 * FTE 1 * CC

BA: 3101 / PCN: 102
 Kopp, Kathleen
 Management Analyst 1
 Grd 33 * FTE 1 * CC

BA: 3101 / PCN:15
 Ariotti, Kristy
 Radiation Control Specialist 2
 Grd 35 * FTE 1 * LV

BA: 3101 / PCN:81
 Vacant
 Radiation Control Specialist 2
 Grd 35 * FTE 1 * LV

BA: 3101 / PCN:92
 Arnold, Brandee
 Admin Assistant 2
 Grd 25 * FTE 1 * CC

BA: 3101 / PCN:78
 Vacant
 Radiation Control Specialist 2
 Grd 35 * FTE 1 * LV

BA: 3101 / PCN:100
 Hickey, Matthew
 Radiation Control Specialist 2
 Grd 35 * FTE 1 * LV

BA: 3101 / PCN:82
 Bird, Steven
 Radiation Control Specialist 2
 Grd 35 * FTE 1 * LV

BA: 3101 / PCN:93
 Vacant
 Admin Assistant 2
 Grd 25 * FTE 1 * LV

BA: 3101 / PCN:30
 Puente, Dennis
 Radiation Control Specialist 2
 Grd 35 * FTE 1 * LV

BA: 3101 / PCN:36
 Davidson, Christopher
 Radiation Control Specialist 2
 Grd 35 * FTE 1 * CC

Division of Public & Behavioral Health
 Bureau of Health Protection and Preparedness
 Office of Vital Records and
 Medical Marijuana Registry
 (Page 6d)

BA: 3190 / PCN:27
 Hadlock-Burnett, Janice
 Health Bureau Chief
 Grd 42 * FTE 1 * CC

BA: 3190 / PCN:31
 Mead, Monica
 Program Officer 3
 Grd 35 * FTE 1 * CC

BA: 3190 / PCN: 34
 Ramirez, Elisandra
 Admin Assistant 2
 Grd 25 * FTE 1 *

Office of Vital Records (OVR)

Medical Marijuana Registry

BA: 3190 / PCN:3
 Lopez-Zaragoza, Kerly
 Admin Assistant 4
 Grd 29 * FTE 1 * CC

BA: 3190 / PCN:7
 LaRue, Jackie
 Admin Assistant 4
 Grd 29 * FTE 1 * CC

BA: 3190 / PCN:30
 Charlton, Deborah
 Statistician 2
 Grd 31 * FTE 1 * CC

BA: 4547 / PCN:21
 Annabel, Nicole
 Program Officer 1
 Grd 31 * FTE 1 * CC

BA: 3190 / PCN:15
 Berris, Leah
 Admin Assistant 2
 Grd 25 * FTE 1 * CC

BA: 3190 / PCN:9
 Erickson, Kevin
 Admin Assistant 2
 Grd 25 * FTE 1 * CC

BA: 3190 / PCN: 37
 Quihuis, Fred
 Management Analyst 1
 Grd 33 * FTE 1 *

BA: 4547 / PCN:20
 Shore, Ashley
 Admin Assistant 2
 Grd 25 * FTE 1 * CC

BA: 3190 / PCN:17
 Allen, Meliisa
 Admin Assistant 2
 Grd 25 * FTE 1 * CC

BA: 3190 / PCN:2
 Beattie, Caitlyn
 Admin Assistant 2
 Grd 25 * FTE 1 * CC

BA: 3190 / PCN: 36
 Grissom, Daran
 Management Analyst 1
 Grd 33 * FTE 1 *

BA: 4547 / PCN:25
 Burnside, Anna
 Admin Assistant 2
 Grd 25 * FTE 1 * CC

BA: 3190 / PCN:32
 Nolan, Tyler
 Admin Assistant 2
 Grd 25 * FTE 1 * CC

BA: 3190 / PCN:20
 Benton, Daniel
 Admin Assistant 2
 Grd 25 * FTE 1 * CC

BA: 3190 / PCN: 35
 Storey, Wesley
 Management Analyst 1
 Grd 33 * FTE 1 *

BA: 4547 / PCN:22
 Nollet, Deanna
 Admin Assistant 2
 Grd 25 * FTE 1 * CC

BA: 3190 / PCN:21
 Howard, Annah
 Admin Assistant 2
 Grd 25 * FTE 1 * CC

BA: 3190 / PCN:10
 Mendoza, Aniesa
 Admin Assistant 2
 Grd 25 * FTE 1 * CC

BA: 3190 / PCN: 33
 Mejia, Erica
 Accounting Assistant 1
 Grd 23 * FTE 1 *