

DHS Director
 Laura Rich

BA: 3223 / PCN:2025
 Rivers, Andrea
 Division Administrator
 Grd Unclass * FTE 1 * CC

BA: 3223 / PCN:160
 Vezmar, Daniel
 Public Information Officer 1
 Grd 35 * FTE 1 * LV

BA: 3223 / PCN:4
 Knutzon, Kelli
 Executive Assistant
 Grd Unclass * FTE 1 * CC

BA: 3161 / PCN: 16
 Ravin, Leon
 State Psych Med Director
 Unclass * FTE: 1 * LV

BA: 3223 / PCN:2038
 Azzam, Ihsan
 Chief Medical Officer
 Grd Unclass * FTE 1 * CC

BA: 3223 / PCN:17
 Borrowman, John
 Deputy Administrator
 Grd Unclass * FTE 1 * CC

BA: 3223 / PCN:721
 Peek, Julia
 Deputy Administrator
 Grd Unclass * FTE 1 * CC

BA: 3234 / PCN: 225
 DeValliere, Mitch
 Agency Manager (Ea)
 Grd Unclass * FTE 1 * CC

BA: 3168 / PCN:10
 Dillinger, Ronna
 Deputy Administrator
 Grd Unclass * FTE 1 * LV

BA: 3645 / PCN: 400
 Cross, Drew
 Statewide Forensic Director
 Unclass * FTE: 1 * SP

BA: 3223 / PCN:508
 Bullock, Melissa
 Medical Epidemiologist
 Grd Unclass * FTE 1 * CC

Fiscal Services
 Public Health

Community Health Nursing

Public Health Infrastructure
 and Improvement

Northern Nevada Adult
 Mental Health Services
 (NNAMHS)

Stein

State Office of Epidemiology

Fiscal Services
 Behavioral Health

Bureau of Child, Family and
 Community Wellness

Southern Nevada Adult
 Mental Health Services
 (SNAMHS)

Lakes Crossing Center
 (LCC)

Health Protection &
 Preparedness

HIV Program

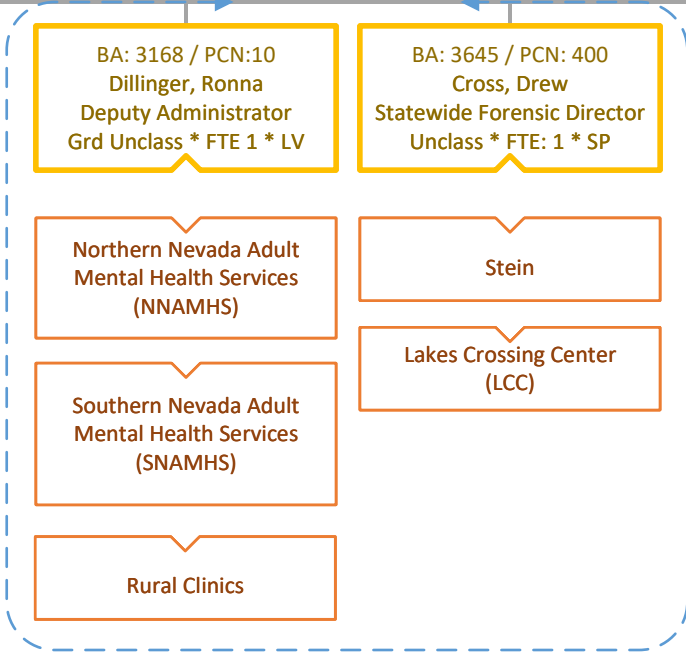
Rural Clinics

BA: 3648 / PCN:102
 Altman, Annette
 Chief Operations Officer
 Grd Unclass * FTE 1 * CC

Behavioral Health, Wellness,
 and Prevention

Office of Information
 Technology (OIT)

Human Resources



Org Charts for
 Clinical Services maintained separately

Division of Public & Behavioral Health (DPBH)
Clinical Services
(Page 2)

BA: 3223 / PCN:2025
Rivers, Andrea
Division Administrator
Grd Unclass * FTE 1 * CC

BA: 3168 / PCN:10
Dillinger, Ronna
Deputy Administrator
Grd Unclass * FTE 1 * LV

BA: 3645 / PCN: 400
Cross, Drew
Statewide Forensic Director
Unclass * FTE: 1 * SP

Northern Nevada Adult
Mental Health Services
(NNAMHS)

Southern Nevada Adult
Mental Health Services
(SNAMHS)

Rural Clinics

Stein Hospital

Lakes Crossing Center
(LCC)

BA: 3162 / PCN: 725
Lindsmith, Julie
Agency Manager (Ea)
Grd 55 * FTE: 1 * SP

BA: 3161 / PCN: 517
Lynch, Susan
Hospital Administrator
Unclass * FTE: 1 * LV

BA: 3161 / PCN: 206
Richardson-Adams, Ellen
Agency Manager (Ea)
Unclass * FTE: 1 * LV

BA: 3161 / PCN: 1101
Roche, Joe
Agency Manager
Unclass * FTE: 1 * LV

BA: 3645 / PCN: 12
Africa, Stephanie
Agency Manager (Ea)
Unclass * FTE: 1 * SP

Complete Organizational Charts
Maintained Separately

Complete Organizational Charts
Maintained Separately

Complete Organizational Charts
Maintained Separately

Complete Organizational Charts
Maintained Separately

Complete Organizational Charts
Maintained Separately