

DHS Director
 Laura Rich

BA: 3223 / PCN:2025
 Rivers, Andrea
 Division Administrator
 Grd Unclass * FTE 1 * CC

BA: 3223 / PCN:160
 Vezmar, Daniel
 Public Information Officer 1
 Grd 35 * FTE 1 * LV

BA: 3223 / PCN:4
 Knutzon, Kelli
 Executive Assistant
 Grd Unclass * FTE 1 * CC

BA: 3161 / PCN: 16
 Ravin, Leon
 State Psych Med Director
 Unclass * FTE: 1 * LV

BA: 3223 / PCN:2038
 Azzam, Ihsan
 Chief Medical Officer
 Grd Unclass * FTE 1 * CC

BA: 3223 / PCN:17
 Borrowman, John
 Deputy Administrator
 Grd Unclass * FTE 1 * CC

BA: 3223 / PCN:721
 Peek, Julia
 Deputy Administrator
 Grd Unclass * FTE 1 * CC

BA: 3234 / PCN: 225
 DeValliere, Mitch
 Agency Manager (Ea)
 Grd Unclass * FTE 1 * CC

BA: 3168 / PCN:10
 Dillinger, Ronna
 Deputy Administrator
 Grd Unclass * FTE 1 * LV

BA: 3645 / PCN: 400
 Cross, Drew
 Statewide Forensic Director
 Unclass * FTE: 1 * SP

BA: 3223 / PCN:508
 Bullock, Melissa
 Medical Epidemiologist
 Grd Unclass * FTE 1 * CC

Fiscal Services
 Public Health

Community Health Nursing

Public Health Infrastructure
 and improvement

Northern Nevada Adult
 Mental Health Services
 (NNAMHS)

Lakes Crossing Center
 (LCC)

Office of State
 Epidemiology

Fiscal Services
 Behavioral Health

Bureau of Child, Family and
 Community Wellness

Primary Care Office

Southern Nevada Adult
 Mental Health Services
 (SNAMHS)

Stein

Health Protection &
 Preparedness

HIV Program

BA: 3648 / PCN:102
 Altman, Annette
 Chief Operations Officer
 Grd Unclass * FTE 1 * CC

Behavioral Health,
 Wellness, and Prevention

Office of Information
 Technology (OIT)

Human Resources

Rural Clinics

Org Charts for
 Administrative Services to
 follow

Division of Public & Behavioral Health (DPBH)
Administrative Services
(Page 2)

BA: 3223 / PCN:2025
Rivers, Andrea
Division Administrator
Grd Unclass * FTE 1 * CC

BA: 3223 / PCN:17
Borrowman, John
Deputy Administrator
Grd Unclass * FTE 1 * CC

BA: 3648 / PCN:102
Altman, Annette
Chief Operations Officer
Grd Unclass * FTE 1 * CC

Fiscal Services
Public Health
Page 3 & 3a

Fiscal Services
Behavioral Health
Page 4

Office of Information
Technology (OIT)
Page 5

Human Resources
Page 6

BA: 3223 / PCN:2
Diossa, Leandra
Admin Services Officer 4
Grd 44 * FTE 1 * CC

BA: 3168 / PCN: 15
Vacant
Admin Services Officer 4
Grd 44 * FTE 1 * CC

BA: 3223 / PCN:0220
Lara, Anne
Chief IT Manger
Grd 45 * FTE 1 * CC

BA: 3223 / PCN:2028
Cronan, Melissa
HR Officer 3
Grd 41 * FTE 1 * CC

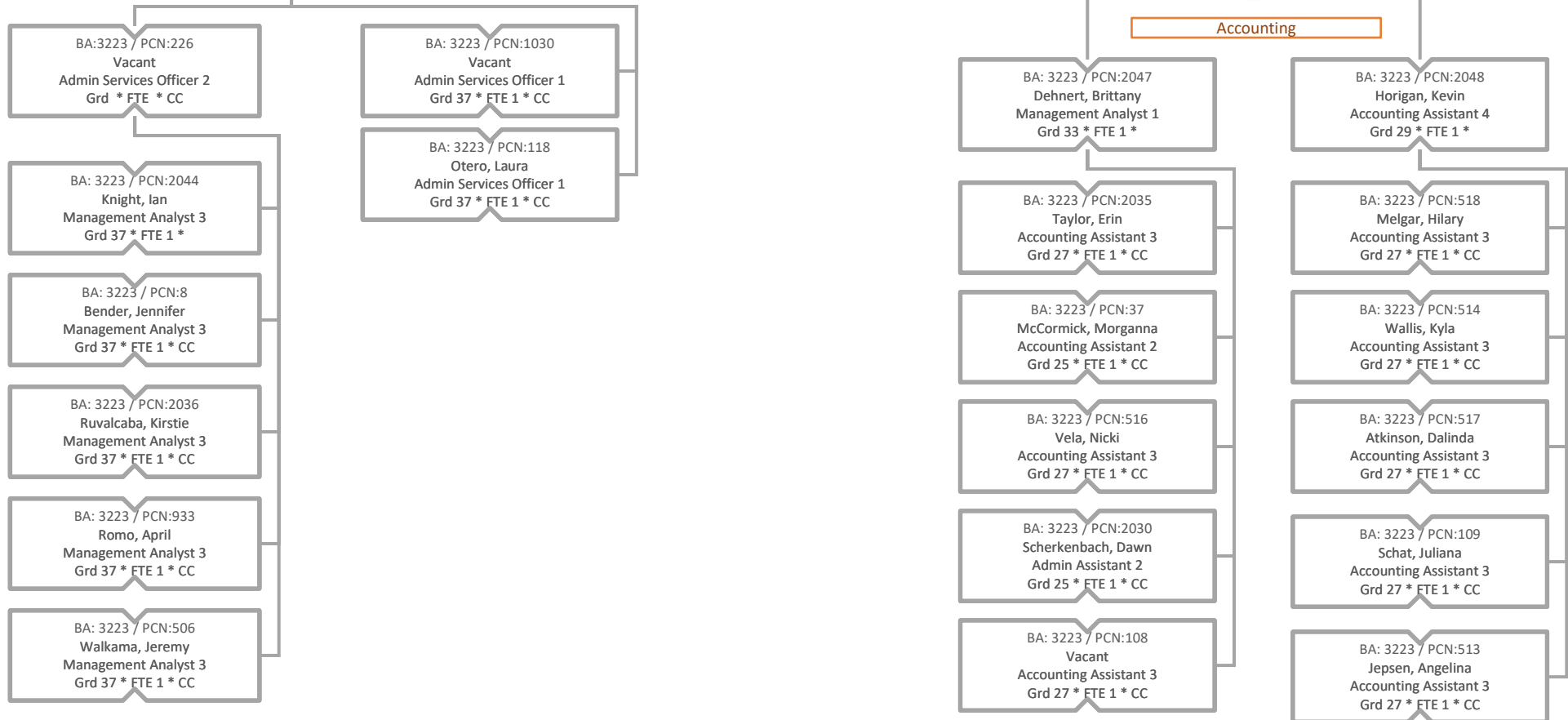
Division of Public & Behavioral Health (DPBH)
 Administrative Services
 Fiscal Services – Public Health
 (Page 3)

BA: 3223 / PCN:17
 Borrowman, John
 Deputy Administrator
 Grd Unclss * FTE 1 * CC

BA: 3223 / PCN:2
 Diossa, Leandra
 Admin Services Officer 4
 Grd 44 * FTE 1 * CC

BA: 3223 / PCN:849
 Edlefsen, Carrie
 Admin Services Officer 3
 Grd 41 * FTE 1 * CC

BA: 3223 / PCN:320
 Wagner, Richard
 Management Analyst 4
 Grd 39 * FTE 1 * CC



Division of Public & Behavioral Health (DPBH)
 Administrative Services
 Fiscal Services – Public Health Cont.
 (Page 3a)

BA: 3223 / PCN:17
 Borrowman, John
 Deputy Administrator
 Grd Unclass * FTE 1 * CC

BA: 3223 / PCN:3
 Silzell, Michele
 Admin Services Officer 3
 Grd 41 * FTE 1 * CC

Grants Management Unit

BA: 3223 / PCN:2031
 Florence, Jamie
 Management Analyst 4
 Grd 39 * FTE 1 * CC

BA: 3223 / PCN:9
 Marantette, Linda
 Management Analyst 4
 Grd 39 * FTE 1 * CC

BA: 3223 / PCN:715
 Ritter, Douglas
 Management Analyst 2
 Grd 35 * FTE 1 * CC

BA: 3223 / PCN:716
 Quispe-Pajulo, Leandron
 Management Analyst 2
 Grd 35 * FTE 1 * CC

BA: 3223 / PCN:2032
 Keen, Selina
 Management Analyst 1
 Grd 33 * FTE 1 * CC

BA: 3223 / PCN:714
 Brewer, Sara
 Management Analyst 2
 Grd 35 * FTE 1 * CC

BA: 3223 / PCN:580
 Osmer, Meagan
 Management Analyst 1
 Grd 33 * FTE 1 * CC

BA: 3223 / PCN:713
 McGrath, Kaitlin
 Management Analyst 2
 Grd 35 * FTE 1 * CC

BA: 3223 / PCN:512
 Bruns, Ryan
 Management Analyst 1
 Grd 33 * FTE 1 * CC

BA: 3223 / PCN:100
 Hardy, Cailey
 Management Analyst 2
 Grd 35 * FTE 1 * CC

BA: 3223 / PCN:216
 Mistretta, Jacqueline
 Management Analyst 1
 Grd 33 * FTE 1 * CC

BA: 3223 / PCN:590
 Alvarez, Amy
 Management Analyst 2
 Grd 35 * FTE 1 * CC

Contract Unit

BA: 3223 / PCN:2033
 Castro, Derek
 Management Analyst 3
 Grd 37 * FTE 1 * CC

BA: 3223 / PCN:2043
 Stidham, Lillian
 Management Analyst 2
 Grd 35 * FTE 1 *

BA: 3223 / PCN:511
 Vacant
 Accounting Assistant 3
 Grd 27 * FTE 1 * CC

ROCS Admin

BA: 3223 / PCN:2040
 Howe, Brittany
 Management Analyst 1
 Grd 33 * FTE 1 *

Grants Admin Unit

BA: 3223 / PCN:2027
 Kopp, Kristen
 Management Analyst 3
 Grd 37 * FTE 1 * CC

BA: 3223 / PCN:711
 McCabe, Rebecca
 Program Officer 2
 Grd 33 * FTE 1 * CC

BA: 3223 / PCN:2041
 Vacant
 Grants & Projects Analyst 1
 Grd 33 * FTE 1 *

Audit Unit

BA: 3223 / PCN:10
 Kendall, Kori
 Auditor 3
 Grd 36 * FTE 1 * CC

Division of Public & Behavioral Health (DPBH)
 Administrative Services
 Fiscal Services – Behavioral Health
 (Page 4)

BA: 3223 / PCN:17
 Borrowman, John
 Deputy Administrator
 Grd Unclas * FTE 1 * CC

BA: 3168 / PCN: 15
 Vacant
 Admin Services Officer 4
 Grd 44 * FTE 1 * CC

BA: 3168 / PCN:64
 Moe, Margaret
 Admin Services Officer 3
 Grd 41 * FTE 1 * CC

BHWP

BA: 3223 / PCN:2046
 Garrett, Heather
 Management Analyst 3
 Grd 33 * FTE 1 *

Allen, Andrea
 ASO

Ripple, Paul
 ASO

NNAMHS

BA: 3162 / PCN: 2
 McMasters, Amanda
 Admin Services Officer 3
 Grd 41 * FTE: 1 * SP

SNAMHS

BA: 3161 / PCN: 1
 Espinoza, Luis
 Admin Services Officer 3
 Grd 41 * FTE 1 * LV

Positions have dual oversight and are reflected on agency specific org charts

Cost Allocation

BA: 3223 / PCN:2029
 Helton, Jenny
 Admin Services Officer 2
 Grd 39 * FTE 1 * CC

BA: 3223 / PCN:206
 Vacant
 Accountant Technician 1
 Grd 30 * FTE 1 * CC

BA: 3223 / PCN:6
 Kinder, Bobbie
 Budget Analyst 3
 Grd 38 * FTE 1 * CC

BA: 3223 / PCN:2045
 Seifert, Lisa
 Management Analyst 2
 Grd 35 * FTE 1 *

BA: 3168 / PCN:66
 Nicora, Wendy
 Management Analyst 2
 Grd 35 * FTE 1 * CC

BA: 3168 / PCN:112
 Whitehead, Margaret
 Accounting Assistant 3
 Grd 27 * FTE 1 * CC

BA: 3168 / PCN:1522
 Hefner, Anita
 Accounting Assistant 2
 Grd 25 * FTE 1 * CC

BA: 3168 / PCN:867
 Little, Cherish
 Accounting Assistant 2
 Grd 25 * FTE 1 * CC

BA: 3168 / PCN:262
 Kinney, Tannis
 Accountant Technician 1
 Grd 30 * FTE 1 * CC

BA: 3168 / PCN:18
 Gatlin, Annette
 Management Analyst 2
 Grd 35 * FTE 1 * CC

BA: 3168 / PCN:871
 Wold, Catherine
 Accounting Assistant 3
 Grd 27 * FTE 1 * CC

BA: 3168 / PCN:915
 Fuentes, Esmeralda
 Accounting Assistant 2
 Grd 25 * FTE 1 * CC

BA: 3168 / PCN:1378
 Wheeler, Ashley
 Accounting Assistant 2
 Grd 25 * FTE 1 * CC

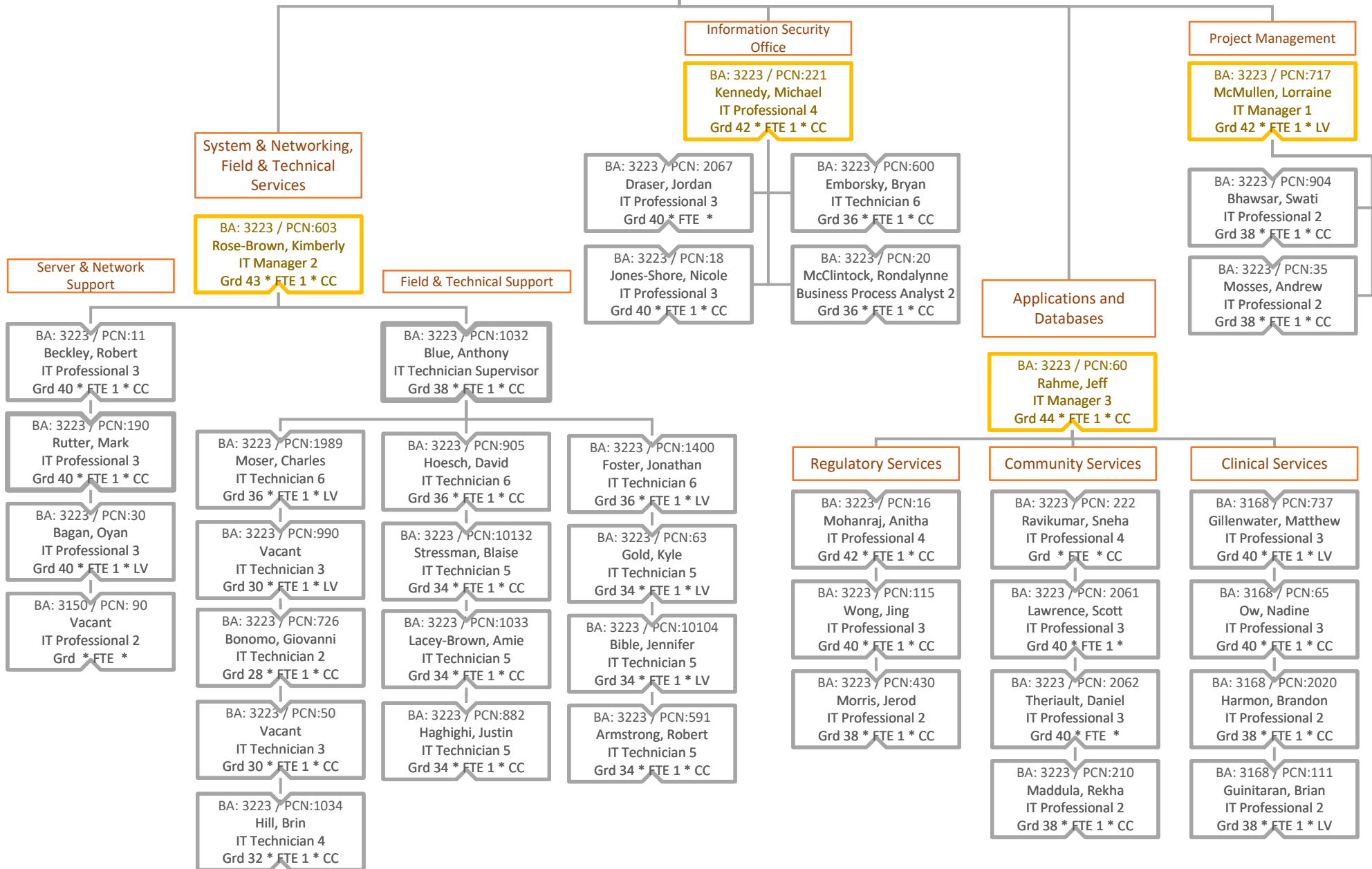
Division of Public & Behavioral Health (DPBH)
 Administrative Services
 Office of Information Technology (OIT)

(Page 5)

BA: 3648 / PCN:102
 Altman, Annette
 Chief Operations Officer
 Grd Unclass * FTE 1 * CC

BA: 3223 / PCN:0220
 Lara, Anne
 Chief IT Manger
 Grd 45 * FTE 1 * CC

BA: 3223 / PCN:592
 Wallis, Samantha
 Admin Assistant 2
 Grd 25 * FTE 1 * CC



BA: 3648 / PCN:102
Altman, Annette
Chief Operations Officer
Grd Unclass * FTE 1 * CC

BA: 3223 / PCN:60
Rahme, Jeff
IT Manager 3
Grd 44 * FTE 1 * CC

MSA Contracts

Caire, Christina
Project Manager IV (3219)

Brown, Amber
Business Analyst IV (3219)

Sonnermann, Kelly
Project Manager I (3219)

Hooper, Doug
Senior Programmer (4547)

Smith, Tiffany
Project Manager IV (3219)

Page, Conan
Client Technologies Specialist
(3219)

Robinson, Stephanie
Business Analyst II (3219)

Vacant
Security Consultant (3219)

Ruiz, Mark
Client Technologist Specialist
(3215)

Brown, Mona Lisa
Client Technologist Specialist
(3218)

Allen, Jim
Solution Architect (3219)

Vadlakunta, Kannaiah
Project Manger (3170)

Division of Public & Behavioral Health (DPBH)
 Administrative Services
 Human Resources
 (Page 6)

BA: 3648 / PCN:102
 Altman, Annette
 Chief Operations Officer
 Grd Unclass * FTE 1 * CC

BA: 3223 / PCN:2028
 Cronan, Melissa
 HR Officer 3
 Grd 41 * FTE 1 * CC

BA: 3161 / PCN: 2514
 Brown-Williams, Melkeya
 Quality Assurance Specialist 3
 Grd: 35 * FTE: 1 * LV

BA: 3161 / PCN: 2629
 Pitzer, Christopher
 Forensic Specialist IV
 (Investigator)
 Grd: 36 * FTE: 1 * SP

Investigations

NNAMHS (3162) & LCC (3645)
 Reno / Sparks Office

All other Budgets
 Carson City Office

SNAMHS & Stein (3162)
 Las Vegas Office

BA: 3162 / PCN: 14
 Garcia, Tracy
 HR Analyst 2
 Grd: 34 * FTE: 1 * SP

BA: 3223 / PCN:1471
 Argust, Christina
 HR Officer 2
 Grd 38 * FTE 1 * CC

BA: 3161 / PCN: 3
 Arellano, Jackie
 HR Officer 2
 Grd: 38 * FTE: 1 * LV

BA: 3161 / PCN: 1009
 Conrad-Tran, Alexa
 Admin Assistant 2
 Grd: 25 * FTE: 1 * LV

BA: 3645 / PCN: 2
 Delaney, Robin
 HR Analyst 1
 Grd: 32 * FTE: 1 * SP

BA: 3223 / PCN:602
 Truelove-McMillen, Meghan
 Personnel Analyst 2
 Grd 34 * FTE 1 * CC

BA: 3223 / PCN: 2070
 Vacant
 Personnel Analyst 2
 Grd 34 * FTE 1 * CC

BA: 3161 / PCN: 1369
 Hernandez, Melissa
 HR Analyst 1
 Grd: 32 * FTE: 1 * LV

BA: 3161 / PCN: 1986
 Stuart, Jeremy
 HR Analyst 2
 Grd: 34 * FTE: 1 * LV

BA: 3162 / PCN: 8
 Morales, Jalina
 HR Tech 3
 Grd: 29 * FTE: 1 * SP

BA: 3223 / PCN:2026
 Gantenbein, Tiffany
 Personnel Technician 3
 Grd 29 * FTE 1 * CC

BA: 3223 / PCN:850
 Villegas, Kayla
 Personnel Analyst 1
 Grd 32 * FTE 1 * CC

BA: 3161 / PCN: 1370
 Nipper, Katlyn
 HR Tech 2
 Grd: 27 * FTE: 1 * LV

BA: 3161 / PCN: 2405
 Alabi, Oladipo
 HR Tech 3
 Grd: 29 * FTE: 1 * LV

BA: 3162 / PCN: 12002
 Applegate, Melissa
 HR Tech 1
 Grd: 25 * FTE: 1 * SP

BA: 3223 / PCN:121
 Murphy, Savannah
 Accounting Assistant 2
 Grd 25 * FTE 1 * CC

BA: 3223 / PCN:14
 Brittany, Aviles
 Personnel Technician 2
 Grd 27 * FTE 1 * CC

BA: 3161 / PCN: 476
 Lacaman, Jessica
 HR Tech 2
 Grd: 27 * FTE: 1 * LV

BA: 3161 / PCN: 758
 Greenaltch, Kathy
 Accounting Assistant 4
 Grd 29 * FTE: 1 * LV

BA: 3162 / PCN: 15
 Smith, Michael
 Admin Assistant 2
 Grd: 25 * FTE: 1 * SP

BA: 3223 / PCN:710
 Martinez, Joseph
 Admin Assistant 2
 Grd 25 * FTE 1 * CC

BA: 3161 / PCN: 268
 Macario, Ava
 Admin Assistant 2
 Grd: 25 * FTE: 1 * LV

BA: 3161 / PCN: 1687
 Villeneuve, Michelle
 HR Tech 2
 Grd: 27 * FTE: 1 * LV

BA: 3161 / PCN: 873
 Liranzo, Marlene
 Accounting Assistant 3
 Grd 27 * FTE: 1 * LV

BA: 3161 / PCN: 1368
 Vacant
 Training Officer 1
 Grd: 34 * FTE: 1 * LV

BA: 3161 / PCN: 1012
 Diaz, Annette
 Accounting Assistant 3
 Grd: 27 * FTE: 1 * LV

Payroll

Payroll

Employee Training and EDU

Payroll

Employee Training and EDU

Division of Public & Behavioral Health (DPBH)
Administrative Support
(Page 7)

BA: 3223 / PCN:2025
Rivers, Andrea
Division Administrator
Grd Unclass * FTE 1 * CC

BA: 3223 / PCN:4
Knutzon, Kelli
Executive Assistant
Grd Unclass * FTE 1 * CC

BA: 3223 / PCN:2037
Musser, Brette
Admin Assistant 3
Grd 27 * FTE 1 * CC

BA: 3223 / PCN:2034
Baltisberger, Faythe (Sara)
Admin Assistant 3
Grd 27 * FTE 1 * CC

BA: 3223 / PCN:712
West, William
Admin Assistant 1
Grd 23 * FTE 1 * CC